



Digital Product Range

 **CLICK ON THE PRODUCTS**





40 years of international expertise
in **the main fields** of automation





Since 1984, **pneumatic solutions** for a range of different industries in over **60 markets worldwide**



PACKAGING
& LOGISTICS



FOOD &
BEVERAGE



BIOMEDICAL
& PHARMA



PROCESS
INDUSTRIES



WOOD, GLASS
& ABRASIVES



VACUUM &
MANIPULATION



AUTOMOTIVE
& TRUCKS



RAILWAYS
& RIDES



TEXTILE &
PRINTING



WELDING &
SIDERURGICAL

**ALWAYS
COMMITTED
TO QUALITY**

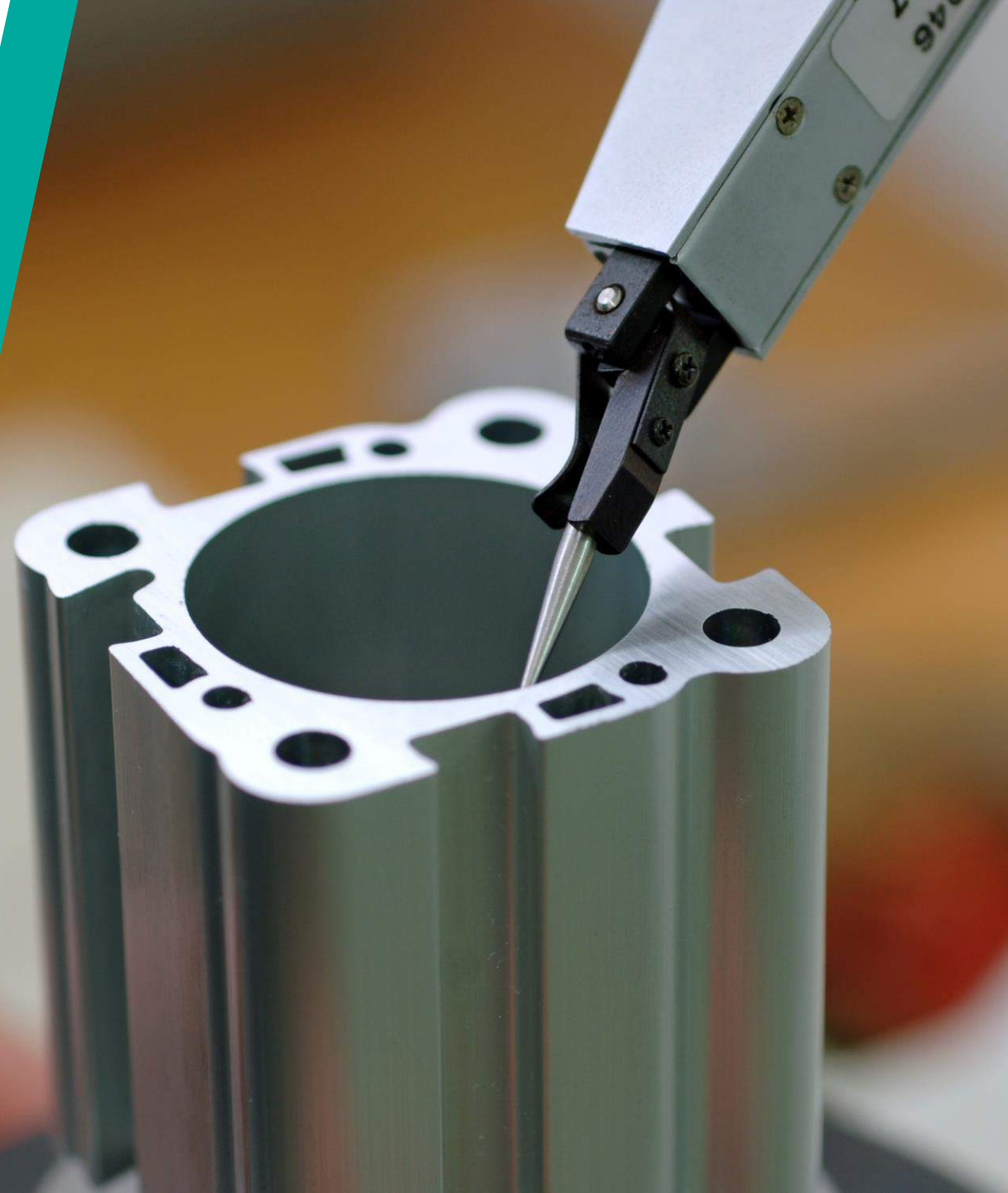
UNI EN ISO 9001
compliant since 1996
100% of products tested



SGS

CLICK TO DOWNLOAD ISO CERTIFICATION

MADE IN ITALY





THE RANGE

CYLINDERS

Pneumatic actuators & grippers

page 6

CLICK ON PRODUCTS



VALVES

Pneumatic & solenoid valves

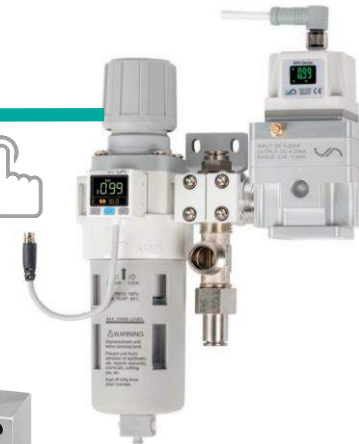
page 19



AIR TREATMENT

FRL units & precision regulators

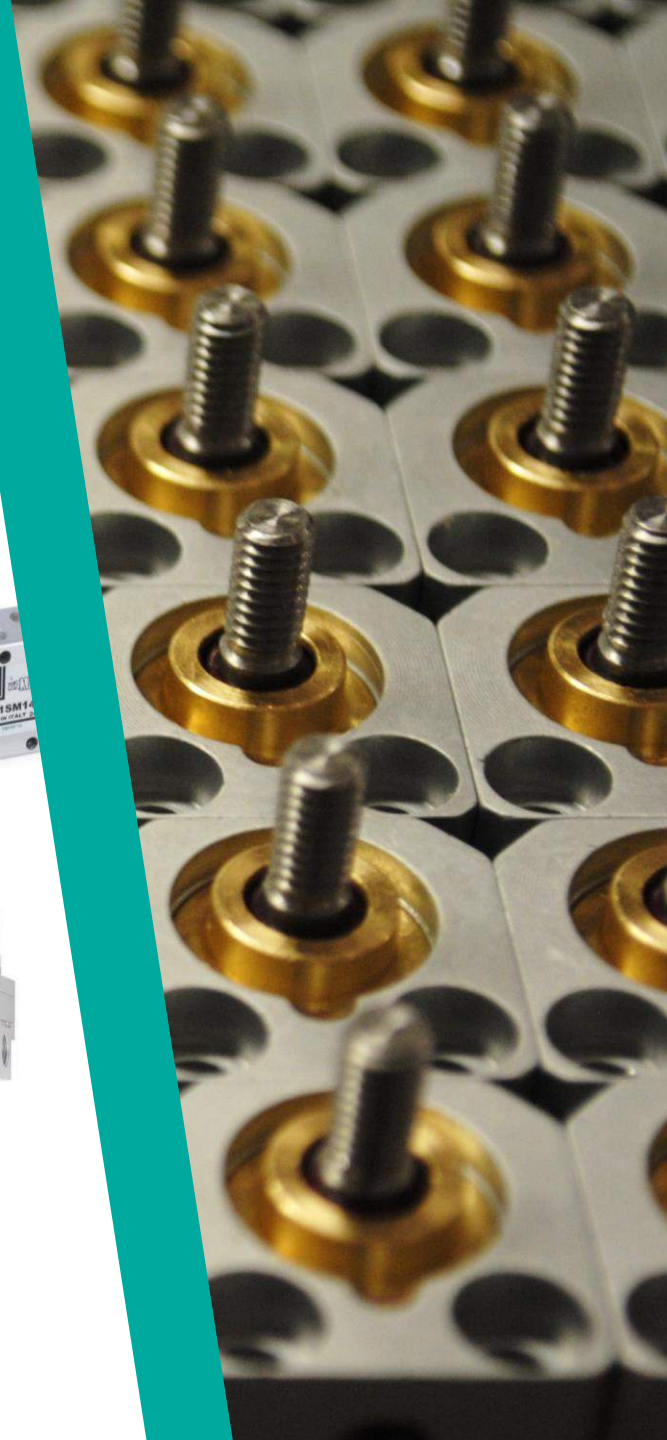
page 31



FITTINGS

Fittings, flow regulators, silencers

page 38





CYLINDERS

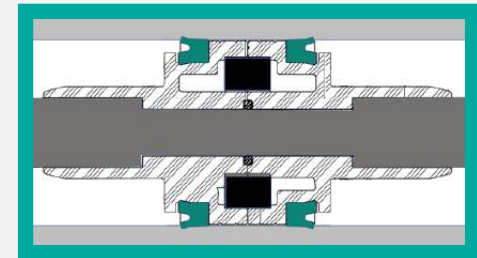
Over 40 million cylinders produced since 1984

PTFE-graphite-bronze
long bushing guide



Lapped/rolled
stainless steel rods

Polyurethane
(PUR) lip seals
for all series



CYLINDERS

RANGE MAP

 ATEX CYLINDERS 

 STAINLESS STEEL CYLINDERS

CLICK ON
PRODUCTS



ISO STANDARD CYLINDERS

page 8

STAINLESS STEEL CYLINDERS

page 16



GUIDED NON-ROTATION

page 12



ROTARY AND SLIDES

page 13



LONG STROKE

page 14



PNEUMATIC GRIPPERS

page 15





BACK TO
THE RANGE

ISO 6432 ROUND CYLINDERS



Assembly kits available



Available with non-rotation hexagonal rod



DLM/ALM*

ø08, 10, 12, 16, 20, 25

ISO 6432 magnetic cylinders

*stainless steel version DLX/ALX: page 16

DLMT/ALMT

ø32, 40, 50, 63

Round magnetic cylinders

CLICK ON
PRODUCTS ↑





BACK TO THE RANGE

ISO 15552 STANDARD CYLINDERS



 Polyurethane lip seals, stainless steel rods



HVT*

ø32, 40, 50, 63, 80, 100, 125

ISO 15552 magnetic cylinders

*stainless steel version HVX: page 16

 Non-rotation versions available



Rod-brake version: HVB from 32 to 100

FKM seals available for all sizes



HVJ

ø160, 200, 250, 320, (300, 400)

ISO 15552 big-size magnetic cylinders

 400 size on request

CLICK ON PRODUCTS 

MAGNETIC SWITCHES





BACK TO
THE RANGE

ISO 21287 & COMPACT CYLINDERS



Available with
internal non-rotation

NSK*

ø12, 16, 20, 25, 32, 40, 50, 63, 80, 100, 125

ISO 21287 & UNITOP compact cylinders

*stainless steel version SHX: page 16



Polyurethane
double lip seals



SHJ

ø160, 200

Big size compact magnetic cylinders



SHQ

ø12, 16, 20, 25, 32, 40, 50, 63, 80, 100, 125

Short-stroke magnetic cylinders

CLICK ON
PRODUCTS ↑





BACK TO
THE RANGE

ISO CYLINDERS CONVERSION CHART



		FESTO	SMC	PARKER	NORGREN	ASCO
 ISO 6432	DLM ALM	DSNU (double act.) ESNU (single act.)	C85	P1A	RM8000	Series 435
 ISO 15552	HVT HVJ	DSBG DSBC DSBF	CP95 CP96	P1D (discontinued) P1F	PRA802000	Series 450 Series 453
 ISO 21287 & COMPACT	SHC SHU SHQ	ADN (double act.) EDN (single act.) ADVU (UNITOP)	C55 CDQ	P1P	RA192000 RM92000	Series 499



BACK TO THE RANGE

GUIDED NON-ROTATION SOLUTIONS



Available in stainless steel

GLH*

ø20, 25, 32, 40, 50, 63, 80, 100

ISO 15552/6432 compliant linear control units H
*stainless steel version GLX: page 16



Ball-bearing guide version available



SHG

ø12, 16, 20, 25, 32, 40, 50, 63, 80, 100

Compact guide non-rotation cylinders



2/3/4-tandem version available



NCV

ø63

Flat non-rotation pneumatic cylinders

MAGNETIC SWITCHES



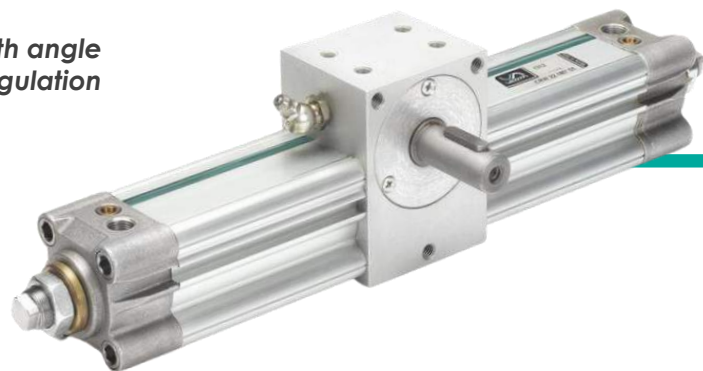
CLICK ON PRODUCTS ↑



BACK TO
THE RANGE

ROTARY ACTUATORS AND SLIDES

 With angle
regulation



RHV

ø12, 16, 20, 25, 32, 40, 50, 63

Rotary actuators (male/female, 90°/180°/360°)



HPS

Pneumatic dual holed-rod slides

CLICK ON
PRODUCTS 





BACK TO
THE RANGE

LONG STROKE ACTUATORS



RLF

ø25, 32, 40, 50, 63, 80, 100

Long stroke rodless cylinders



TLS

ø25, 32, 40, 50, 63

Telescopic cylinders (2, 3 or more stages)

CLICK ON
PRODUCTS ↑

MAGNETIC SWITCHES





BACK TO
THE RANGE

PNEUMATIC GRIPPERS



NGA

ø10, 12, 16, 20, 25, 32

Angular 30° grippers (single/double acting)



 Ball-bearing
guiding system

NGP

ø10, 16, 20, 25

Parallel grippers (single/double acting)

NEW



NGT

ø12, 16, 20, 25

180° grippers

CLICK ON
PRODUCTS 





BACK TO
THE RANGE

STAINLESS STEEL CYLINDERS



 Inspectionable heads



FCX

ø32, 40, 50, 63

AISI 304 cylinders for the food industry

 Available with non-rotation hexagonal rod



DLMX/ALMX

ø10, 12, 16, 20, 25

ISO 6432 cylinders (with adj. cushion) in AISI304/316

NEW



HVX

ø32, 40, 50, 63, 80, 100, 125 (160, 200)

ISO 15552 cylinders in AISI 316

CLICK ON
PRODUCTS ↑

MAGNETIC SWITCHES

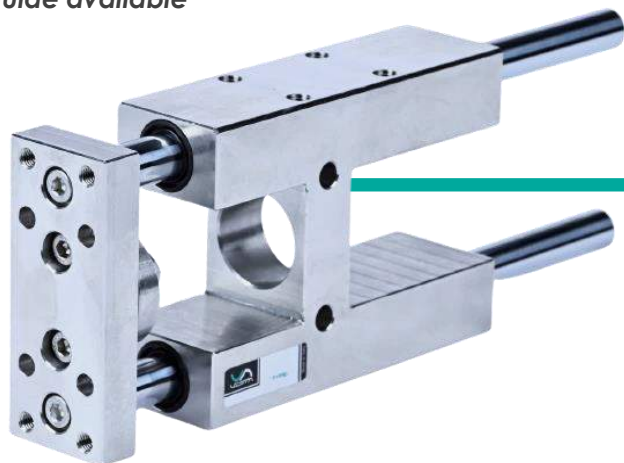




BACK TO
THE RANGE

STAINLESS STEEL CYLINDERS

 Ball-bearing
guide available



GLX

ø25, 32, 40, 50, 63, 80, 100

ISO 1552/6432 linear H guides in AISI304/316



SHX

ø16, 20, 25, 32, 40, 50, 63, 80, 100

ISO 21287 compact cylinders in AISI 316

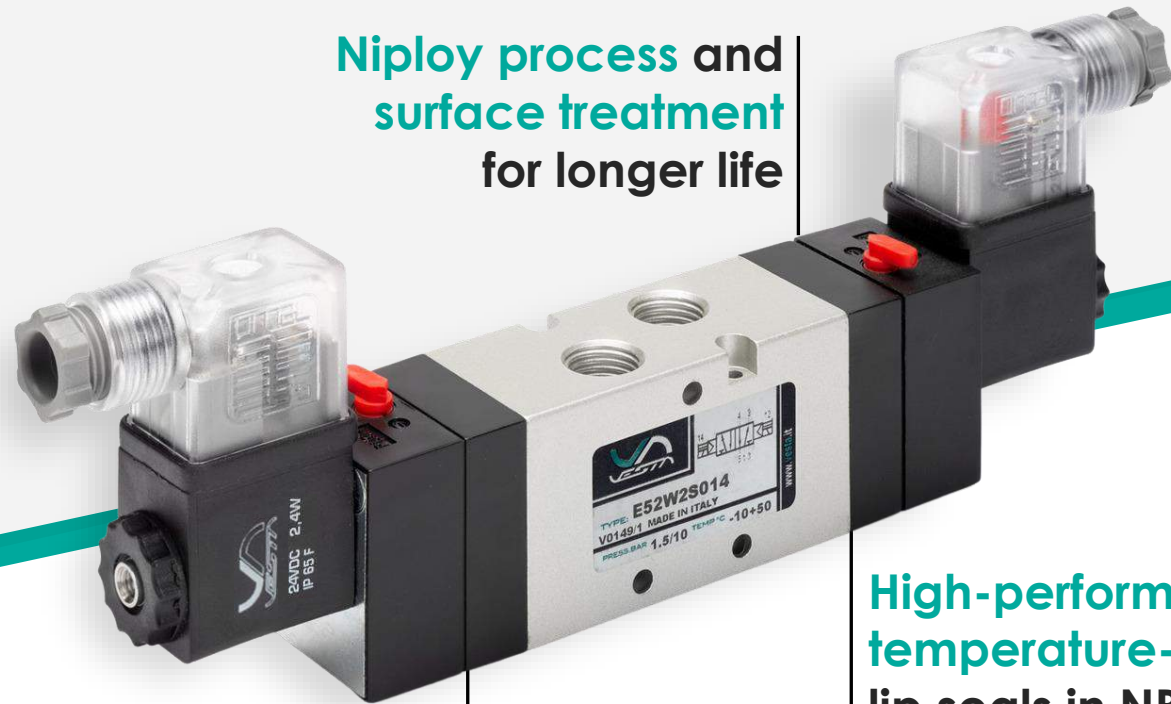
CLICK ON
PRODUCTS 





VALVES

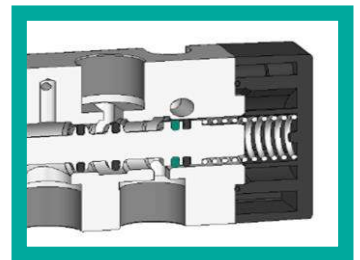
34.5 million valves produced since 1989



Niploy process and surface treatment for longer life

High-performance temperature-resistant lip seals in NBR or FKM

Optimized spaces for high-flow



VALVES

RANGE MAP

 3D STEP FILES 

CLICK ON
PRODUCTS



VALVES & NAMUR FOR EXTREME ENVIRONMENT

page 20



VALVES & NAMUR FOR STANDARD ENVIRONM.

page 22



ISO VALVES SIZE 1, 2, 3, 4

page 23



MULTIPOLE/NETWORK VALVE ISLANDS

page 24



MINI SIZE VALVES

page 25



3/2 DIRECT OPERATORS

page 26



HIGH-FLOW 3/2 VALVES

page 27



MECHANICAL & MANUAL VALVES

page 28



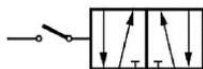


BACK TO THE RANGE

VALVES & SOLENOID VALVES

EXTREME ENVIRONMENT

Available with position sensor



SINCE 1989



High & low temp. versions available

ATEX II 3GD as standard

E/NM Series

22mm coil
G1/8", 1/4", 1/2", NAMUR

ATEX II 3GD dust resistant lip-seals valves



CLICK ON PRODUCTS





BACK TO
THE RANGE

ATEX II 2 GD VALVES & SOLENOID VALVES



Ex ATEX II 2GD

XE/XNM/XSVE

22mm coil ATEX II 2GD
G 1/4", G 1/2", NAMUR, ISO 1

ATEX II 2GD full metal-body lip-seals valves

 High & low temp.
versions available



CLICK ON
PRODUCTS 

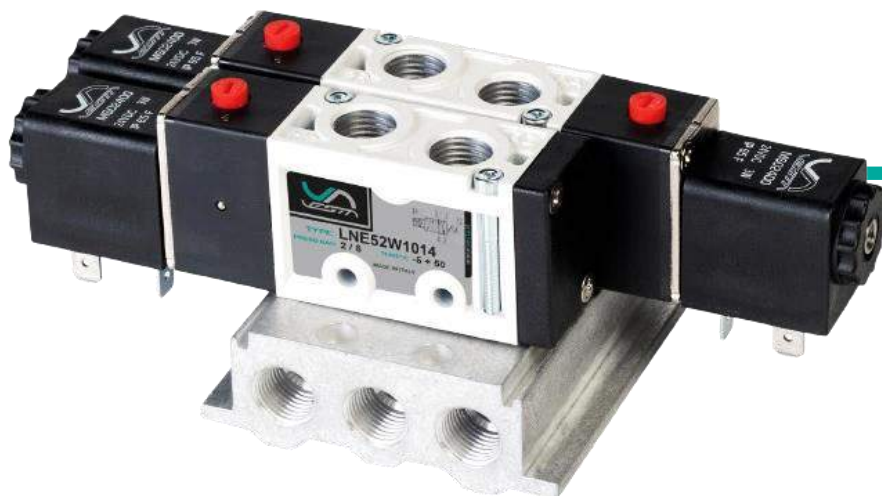




BACK TO THE RANGE

VALVES & SOLENOID VALVES



 NBR lip seals



LNE/LNM Series

22mm coil
G1/8", 1/4", 3/8", 1/2", NAMUR

Light die-cast body lip-seals valves

 External air supply versions available 

CLICK ON PRODUCTS 





BACK TO THE RANGE 

ISO 5599 VALVES & SOLENOID VALVES



 High & low temp. versions available

SVP/SVE Series

22/30mm coil
SIZE ISO 1, ISO 2, ISO 3, ISO 4

Die-cast body lip-seals ISO 5599 valves

 Manifolds available for all sizes (1, 2, 3, 4)

CLICK ON PRODUCTS 





BACK TO THE RANGE

MULTIPOLE & FIELDBUS VALVE MANIFOLD



EWJ MULTIPOLE ISLAND

Operator 10mm
IN: G1/4" OUT: tube Ø 6, Ø 8

Self-configuration modular plug-in valve terminal



Innovative system for coils configuration

EWJ NETLOGIC

PROFINET, ETHERNET IP, ETHERCAT

Industrial network protocol valve terminal



Switching Time 15ms



Assembly kits available



CLICK ON PRODUCTS ↑





BACK TO THE RANGE

MINI SOLENOID VALVES

Flow rate G1/4"
1,400 NL/min



K Series

17mm coil
G1/8", 1/4", 1/2"

High-flow quick-exchange mini valves

Quick switching
times up to 35Hz



CWY Series

10mm coil
M5 ports

Mini M5 port valves manifold

CLICK ON PRODUCTS ↑





BACK TO THE RANGE

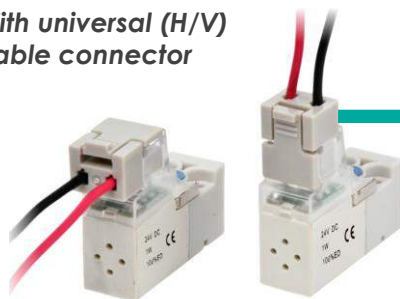
DIRECT ACTING 3/2 OPERATORS



With universal (H/V) cable connector



Fast switching times up to 30Hz



CWJ-10

10mm

3/2 micro operators 10mm (manifold available)



Modular bodies for quick assembly



QBE

22mm coil - G1/8"

3/2 direct acting solenoid valves

CLICK ON PRODUCTS ↑





BACK TO THE RANGE

HIGH-FLOW 3/2 POPPET VALVES

EXTREME ENVIRONMENT



High & low temp. versions available

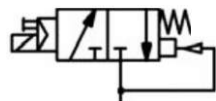


Flow rate 6.000 to 60.000 NL/min

PV32

22/30mm coil
G1/8", 1/4", 3/8", 1/2", 3/4", 1", 1 1/2", 2"

3/2 high-flow poppet valves for air & vacuum



Vacuum with servo-vacuum available

CLICK ON PRODUCTS

COILS & CONNECTORS





BACK TO THE RANGE

MANUAL VALVES

EXTREME ENVIRONMENT



Available with AISI 304 lever

High & low temp. versions available

VCML

G1/8", 1/4", 1/2"

Manual lever valves (AISI 304 lever option)

Available with pneumatic return



VCMT

G1/8", 1/4"

Manual button valves



VFP

G1/4"

Foot pedal valves

CLICK ON PRODUCTS



BACK TO THE RANGE

MECHANICAL VALVES

EXTREME ENVIRONMENT



High & low temp. versions available

VCMS

G1/8", 1/4"

Cam actuated mechanical valves



VCLL

G1/8"

Lateral roller-lever mechanical valves

Food grade (AISI 304) operator available



VCLR

G1/8"

Roller-lever valves (AISI 304 operator option)

CLICK ON PRODUCTS



BACK TO
THE RANGE

MANUAL & MECHANICAL MICRO VALVES



MPGI/MPF/MSR

Push-in Tube Ø4, M5

Manual button/switch micro valves

Available NC/NO,
5/2 and M5 ports



MMA

Push-in Tube Ø4, M5

Cam actuated mechanical micro valves



MMR/MMS

Push-in Tube Ø4, M5

Roller lever mechanical micro valves

CLICK ON
PRODUCTS ↑



BACK TO
THE RANGE

PNEUMATIC LOGIC ELEMENTS

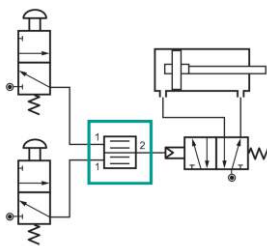


AND/OR/YES/NOT

Push-in Tube Ø4

Logic elements for pneumatic control

Two-hand safety valve



SBI

Push-in Tube Ø4

Two-hand safety valves

CLICK ON
PRODUCTS ↑



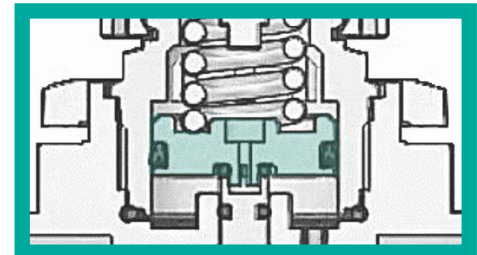
AIR TREATMENT UNITS

All series with
aluminium body
for **high-resistance**



From 1/8" **precision regulation**
up to 2" **high-flow elements**

Acetal polymer pistons
with NBR lip seals for
stable regulation



AIR TREATMENT

 RANGE MAP

 3D STEP FILES 

MANUAL & PILOT PRESSURE REGULATORS

[page 34](#)

CLICK ON PRODUCTS



HIGH-PRECISION & PROPORTIONAL PRESSURE REGULATORS

[page 35](#)

CLICK ON PRODUCTS



MODULAR LINES G1/4-G1" FRL UNITS

[page 36](#)



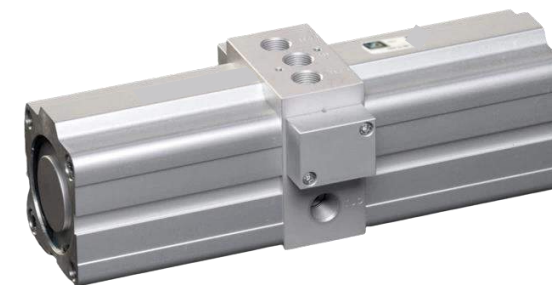
HIGH-PRESSURE & HIGH-FLOW FRL UNITS

[page 39](#)



PRESSURE BOOSTERS

[page 39](#)





BACK TO THE RANGE

MANUAL & PILOT PRESSURE REGULATORS

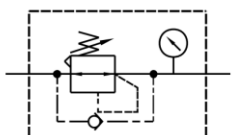


TU-R2

M5, G1/8", 1/4"

Pressure microregulators (with backflow option)

Regulators available with backflow option



High & low temp. versions available

TU-R SIZE 3/4/5

G1/4", 3/8", 1/2", 3/4", 1"

Pressure regulators (with backflow option)



TU-RP

G1/2", G1", G1 1/2", G2"

Pilot pressure regulators

CLICK ON PRODUCTS ↑



BACK TO THE RANGE

HIGH-PRECISION PRESSURE REGULATORS



0.2% F.S. precision

HPR SERIES

G1/8", 1/4", 1/2"

High-precision manual pressure regulators



DPV SERIES

OPERATION MANUAL

G1/4", 1/2" (1")

Proportional valves with electric control

High flow rates:
G1/2" 5,000 NL/min
G1" 14,200 NL/min



DPS SERIES

OPERATION MANUAL

G1/8"

Digital pressure switches (positive and vacuum)

Output: 1-5V,
4-20mA & PNP



DFM SERIES

G1/4", 1/2", 3/4"

Digital flow meters (100 to 2,000 NL/min)



3D STEP FILES

CLICK ON PRODUCTS



BACK TO THE RANGE

FRL UNITS – MODULAR LINES



TU-FRL SIZE 2

G1/4"

R = Regulator, **FR** = Filter-regulator, **FRL** = FRL Unit
F = Filter, **L** = Lubricator, **VM** = 3/2 on-off valve
VS = Slow start + shut-off valve



TU-FRL SIZE 3

G1/4", 3/8", 1/2"

R = Regulator, **FR** = Filter-regulator, **FRL** = FRL Unit
F = Filter, **L** = Lubricator, **VM** = 3/2 on-off valve
VS = Slow start + shut-off valve, **MMF** = Micro-mist filter

 Filtering from 40 to 0,01 µm

CLICK ON PRODUCTS 



BACK TO THE RANGE

FRL UNITS – MODULAR LINES

TU-FRL SIZE 4

G1/2"

R = Regulator, FR = Filter-regulator, FRL = FRL Unit
F = Filter, L = Lubricator, VM = 3/2 on-off valve
VS = Slow start + shut-off valve



Metal bowl available for all sizes

TU-FRL SIZE 5

G3/4", 1"

R = Regulator, FR = Filter-regulator, FRL = FRL Unit
F = Filter, L = Lubricator, VM = 3/2 on-off valve
VS = Slow start + shut-off valve



TU-SF SIZE 4/5

G1/2", 1"

Special filters and water separators



CLICK ON PRODUCTS ↑



BACK TO THE RANGE 

HIGH-FLOW, HIGH-PRESSURE & BOOSTERS



 0-15 bar regulation, 20 bar resistance

 High & low temp. versions available

TU-F, R, L SIZE 4H

G1/2"

High-pressure air treatment units (0-15 bar)
HHT version (+120°C), LLT version (-40°C)



TU-F, R, L SIZE 6/7

G1 1/2", 2"

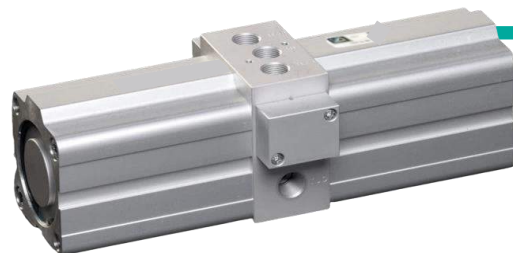
High-flow filters & regulators

Flow rates up to 50,000 NL/min 

PBR SERIES

ø40, 63, 100

Pressure boosters (1:2, 1:3, 1:4)



CLICK ON PRODUCTS 

FITTINGS

 RANGE MAP

 FITTINGS CATALOG 

**QUICK PUSH-IN
FITTINGS & MINI FITTINGS**

page 40



**BRASS
FITTINGS**

page 40



**STAINLESS
STEEL FITTINGS**

page 40



**CONTROL
VALVES**

page 40



**FLOW
REGULATORS**

page 41



SILENCERS

page 41



**FITTINGS WITH
VACUUM GENERATOR**

page 41





BACK TO
THE RANGE

PUSH-IN FITTINGS AND CONTROL VALVES



QF

G1/8", 1/4", 3/8", 1/2"

Quick push-in fittings



QM

M3, M5, M6

Quick push-in mini fittings



QB

G1/8", 1/4", 3/8", 1/2"

Brass push-in fittings



QX

G1/8", 1/4", 3/8", 1/2"

Stainless steel push-in fittings



QV

G1/8", 1/4", 3/8", 1/2"

Control valves

CLICK ON
PRODUCTS ↑

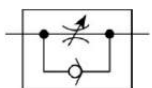


BACK TO THE RANGE

FLOW REGULATORS, SILENCERS, VACUUM



Precision control
high flow capacity



VRF

Precision speed controllers

G1/8", 1/4", 3/8", 1/2"



QR

Push-in speed controllers

G1/8", 1/4", 3/8", 1/2"



QS

Silencers & exhaust control silencers

G1/8", 1/4", 3/8", 1/2"

Vacuum pressure
up to -0.90 bar



VQ

Fittings with vacuum generators

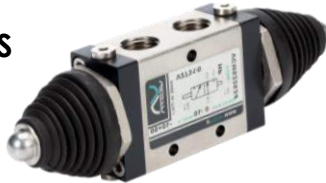
G1/8"

CLICK ON PRODUCTS ↑



A custom Experience.

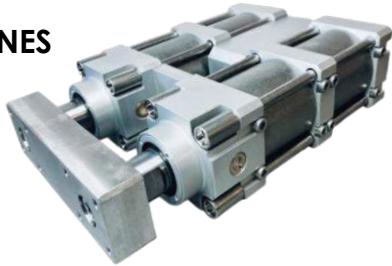
RAILWAYS & METRO SYSTEMS



TRUCKS & AUTOMOTIVE



WELDING PLANTS & MACHINES



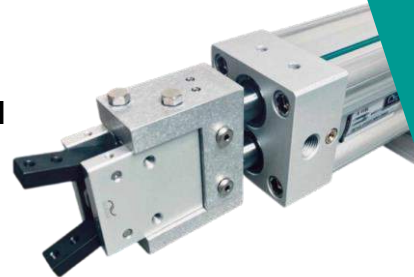
CEMENT & STEEL PLANTS



FOOD PROCESS

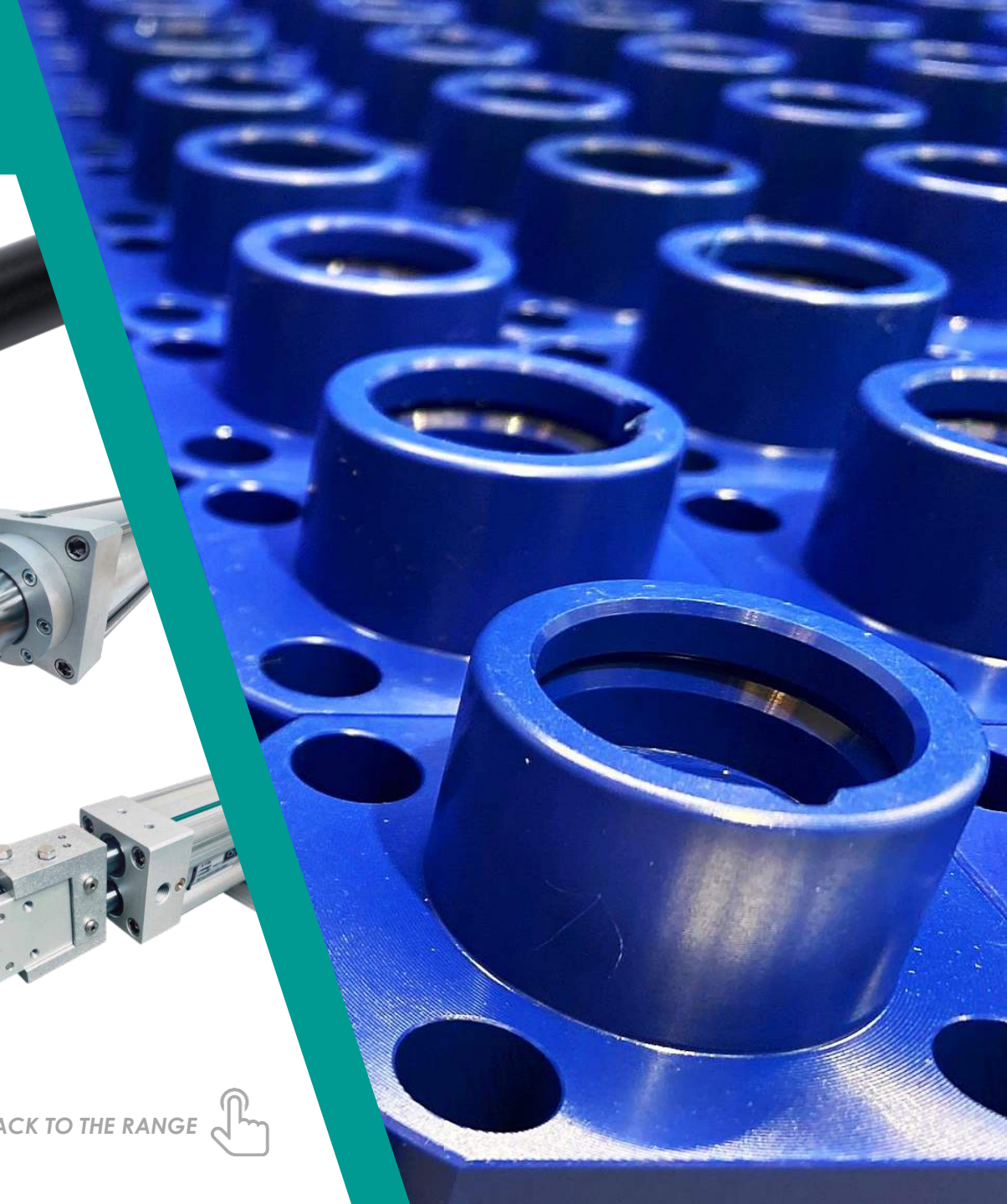


PLASTIC PRODUCTION



CLICK ON
PRODUCTS 

BACK TO THE RANGE



Vesta Automation S.r.l.

Via Martiri di Belfiore 69/A

45100 Rovigo – Italy



+39 0425 474838

info@vesta.it

www.vesta.it

+39 347 634 7881

Vesta Automation Srl



P.IVA/VAT: 03640490284
© Vesta Automation Srl

