



Digital Product Range

 CLICK ON THE PRODUCTS





40 years of international expertise
in **the main fields** of automation





Since 1984, **pneumatic solutions**
for a range of different industries
in over **60 markets worldwide**

CLICK TO EXPLORE VESTA KEY
CUSTOM PNEUMATIC SOLUTIONS



PACKAGING
& LOGISTICS



FOOD &
BEVERAGE



BIOMEDICAL
& PHARMA



PROCESS
INDUSTRIES



WOOD, GLASS
& ABRASIVES



VACUUM &
MANIPULATION



AUTOMOTIVE
& TRUCKS



RAILWAYS
& RIDES



TEXTILE &
PRINTING



WELDING &
SIDERURGICAL

**ALWAYS
COMMITTED
TO QUALITY**

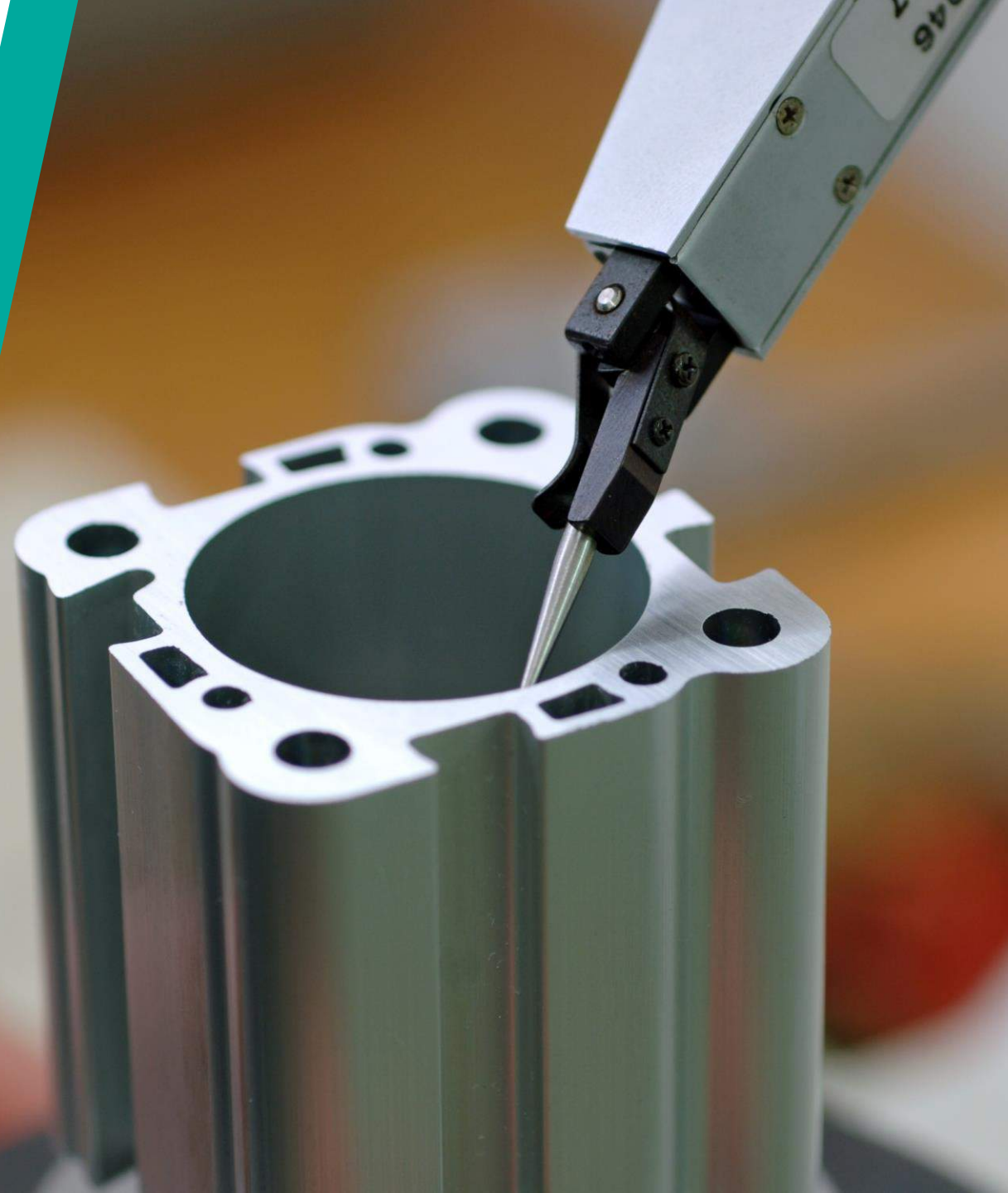
UNI EN ISO 9001
compliant since 1996
100% of products tested



MADE IN ITALY



CLICK TO DOWNLOAD ISO CERTIFICATION





THE RANGE

CYLINDERS

Pneumatic actuators & grippers

page 6

CLICK ON
PRODUCTS



VALVES

Pneumatic & solenoid valves

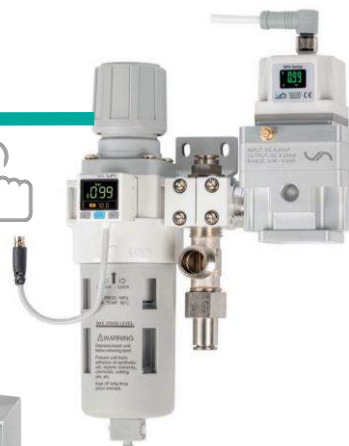
page 19



AIR TREATMENT

FRL units & precision regulators

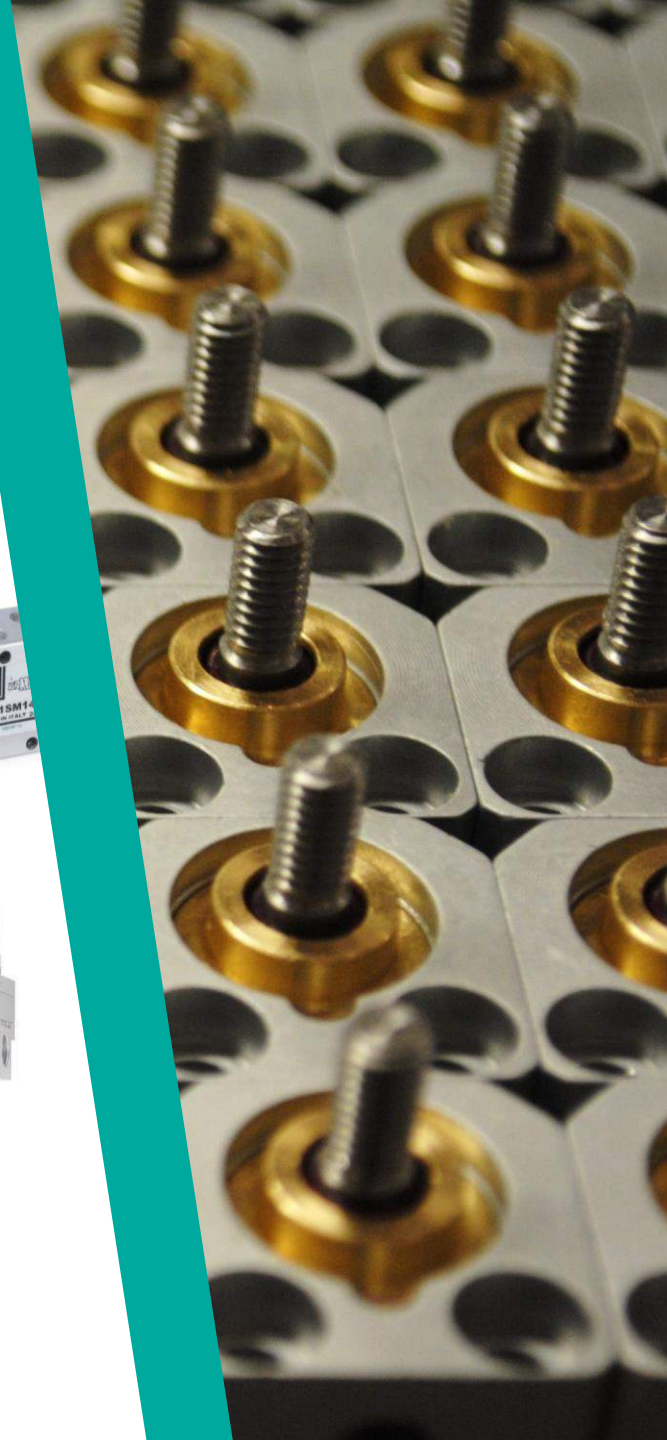
page 31



FITTINGS

Fittings, flow regulators, silencers

page 38





CYLINDERS

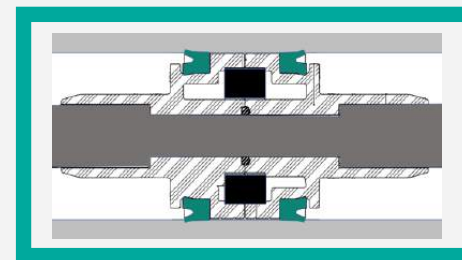
Over 40 million cylinders produced since 1984

PTFE-graphite-bronze
long bushing guide



Lapped/rolled
stainless steel rods

Polyurethane
(PUR) lip seals
for all series



CYLINDERS

RANGE MAP



ATEX CYLINDERS 



STAINLESS STEEL CYLINDERS

ISO STANDARD CYLINDERS

page 8

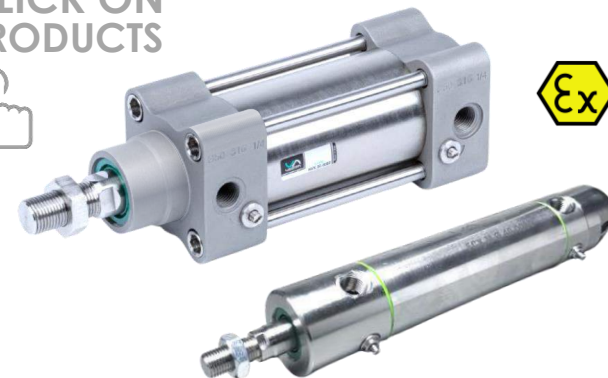
CLICK ON
PRODUCTS



STAINLESS STEEL CYLINDERS

page 16

CLICK ON
PRODUCTS



GUIDED NON-ROTATION

page 12



ROTARY AND SLIDES

page 13



LONG STROKE

page 14



PNEUMATIC GRIPPERS

page 15





ISO 6432 ROUND CYLINDERS



Available with non-rotation hexagonal rod



DLM/ALM*

ø08, 10, 12, 16, 20, 25

ISO 6432 magnetic cylinders

*stainless steel version DLX/ALX: page 16

Assembly kits available



DLT/ALT

ø32, 40, 50, 63

Round magnetic cylinders

CLICK ON
PRODUCTS ↑





ISO 15552 STANDARD CYLINDERS



HVT*

ø32, 40, 50, 63, 80, 100, 125

ISO 15552 magnetic cylinders

*stainless steel version HVX: page 16



Polyurethane lip seals,
stainless steel rods



Available with
internal non-rotation

FKM seals
available
for all sizes



HVJ

ø160, 200, 250, 320, (300, 400)

ISO 15552 big-size magnetic cylinders

CLICK ON
PRODUCTS ↑





BACK TO
THE RANGE

ISO 21287 & COMPACT CYLINDERS



Available with
internal non-rotation

NSK*

ø12, 16, 20, 25, 32, 40, 50, 63, 80, 100, 125

ISO 21287 & UNITOP compact cylinders

*stainless steel version SHX: page 16



Polyurethane
double lip seals



SHJ

ø160, 200

Big size compact magnetic cylinders



SHQ

ø12, 16, 20, 25, 32, 40, 50, 63, 80, 100, 125

Short-stroke magnetic cylinders

CLICK ON
PRODUCTS ↑






BACK TO
THE RANGE

ISO CYLINDERS CONVERSION CHART



		FESTO	SMC	PARKER	NORGREN	ASCO
 ISO 6432	DLM ALM	DSNU (double act.) ESNU (single act.)	C85	P1A	RM8000	Series 435
 ISO 15552	HVT HVJ	DSBG DSBC DSBF	CP95 CP96	P1D (discontinued) P1F	PRA802000	Series 450 Series 453
 ISO 21287 & COMPACT	SHC SHU SHQ	ADN (double act.) EDN (single act.) ADVU (UNITOP)	C55 CDQ	P1P	RA192000 RM92000	Series 499



GUIDED NON-ROTATION SOLUTIONS



 Available in stainless steel

GLH*

ø20, 25, 32, 40, 50, 63, 80, 100

ISO 15552/6432 compliant linear control units H

*stainless steel version GLX: page 16

Ball-bearing guide version available



SHG

ø12, 16, 20, 25, 32, 40, 50, 63, 80, 100

Compact guide non-rotation cylinders



2/3/4-tandem version available



NCV

ø63

Flat non-rotation pneumatic cylinders

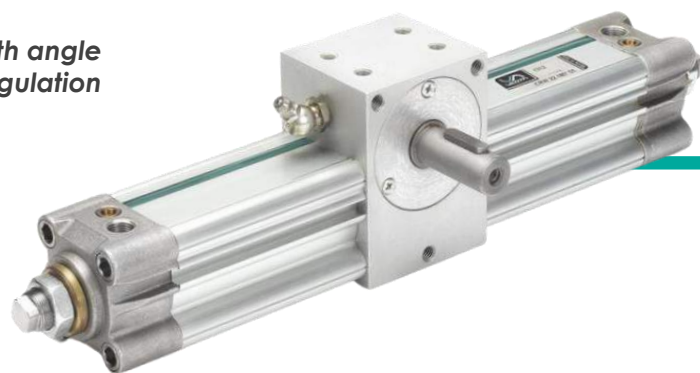
MAGNETIC SWITCHES



CLICK ON PRODUCTS 



ROTARY ACTUATORS AND SLIDES



RHV

ø12, 16, 20, 25, 32, 40, 50, 63

Rotary actuators (male/female, 90°/180°/360°)



HPS

Pneumatic dual holed-rod slides

CLICK ON
PRODUCTS ↑





LONG STROKE ACTUATORS



RLF

ø25, 32, 40, 50, 63, 80, 100

Long stroke rodless cylinders



TLS

ø25, 32, 40, 50, 63

Telescopic cylinders (2, 3 or more stages)

CLICK ON
PRODUCTS ↑





PNEUMATIC GRIPPERS



NGA

ø10, 12, 16, 20, 25, 32

Angular 30° grippers (single/double acting)



Ball-bearing
guiding system

NGP

ø10, 16, 20, 25

Parallel grippers (single/double acting)



NGT

ø12, 16, 20, 25

180° grippers



CLICK ON
PRODUCTS ↑

MAGNETIC SWITCHES





BACK TO
THE RANGE

STAINLESS STEEL CYLINDERS



Inspectionable heads



FCX

ø32, 40, 50, 63

AISI 304 cylinders for the food industry



Available with non-rotation hexagonal rod



DLX/ALX

ø10, 12, 16, 20, 25

ISO 6432 cylinders (with adj. cushion) in AISI304/316



HVX

ø32, 40, 50, 63, 80, 100, 125 (160, 200)

ISO 15552 cylinders in AISI 316

CLICK ON
PRODUCTS ↑



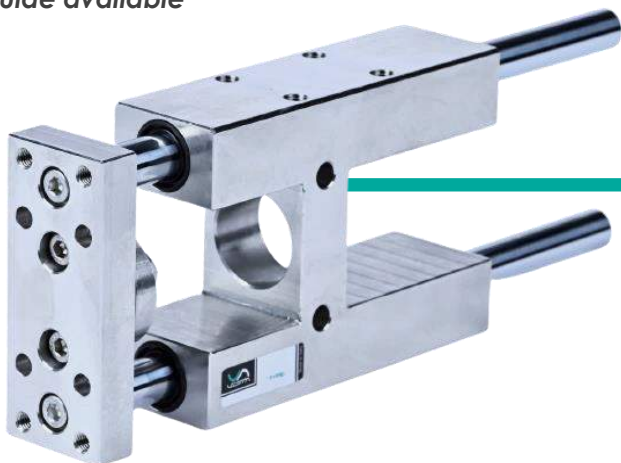


BACK TO
THE RANGE

STAINLESS STEEL CYLINDERS



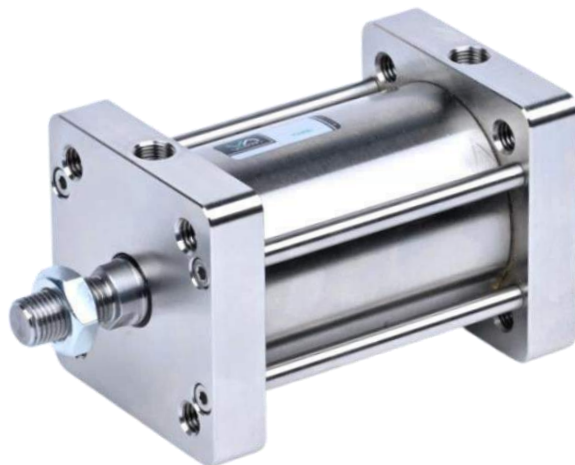
Ball-bearing
guide available



GLX

ø25, 32, 40, 50, 63, 80, 100

ISO 15552/6432 linear H guides in AISI304/316



SHX

ø16, 20, 25, 32, 40, 50, 63, 80, 100

ISO 21287 compact cylinders in AISI 316

CLICK ON
PRODUCTS ↑

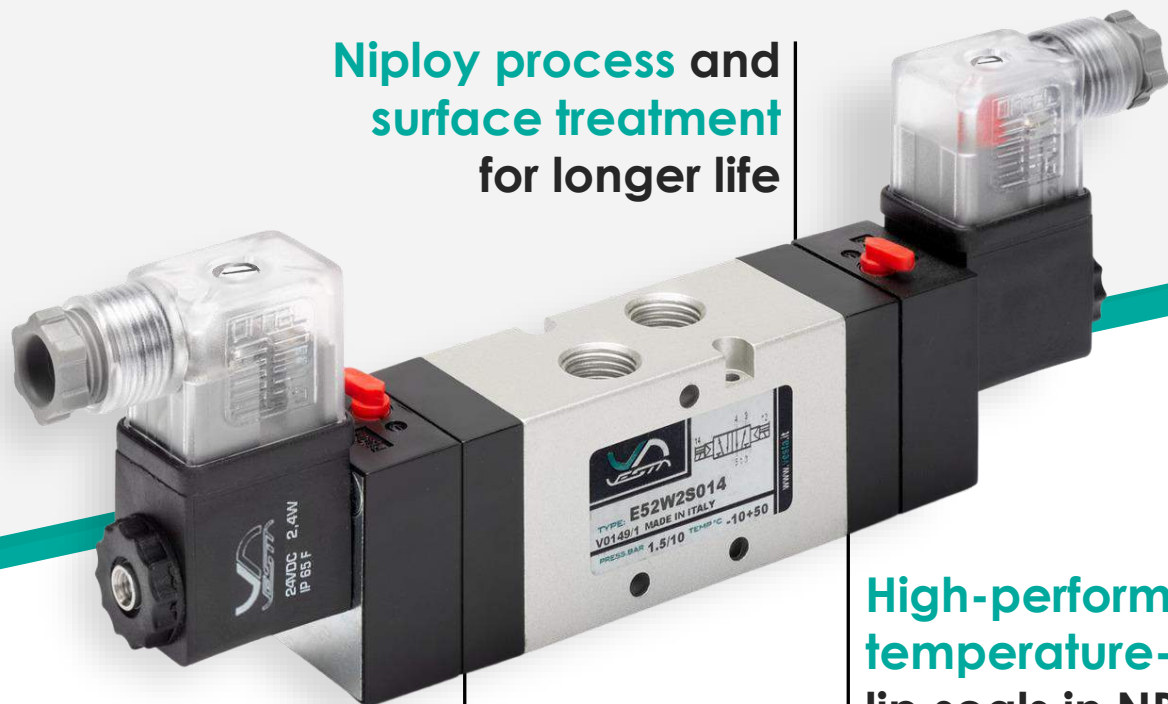
MAGNETIC SWITCHES





VALVES

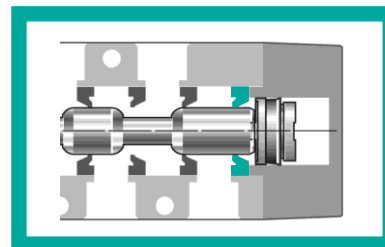
34.5 million valves produced since 1989



Niploy process and
surface treatment
for longer life

Optimized spaces
for high-flow

High-performance
temperature-resistant
lip seals in NBR or FKM



VALVES

RANGE MAP

 3D STEP FILES 

VALVES & NAMUR FOR EXTREME ENVIRONMENT

page 20-21

CLICK ON
PRODUCTS



VALVES & NAMUR FOR STANDARD ENVIRONM.

page 22



ISO VALVES SIZE 1, 2, 3, 4

page 23



MULTIPOLE/NETWORK VALVE ISLANDS

page 24



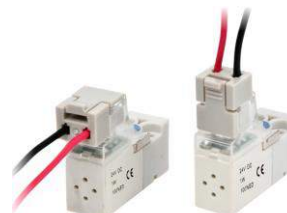
MINI SIZE VALVES

page 25



3/2 DIRECT OPERATORS

page 26



HIGH-FLOW 3/2 VALVES

page 27



MECHANICAL & MANUAL VALVES

page 28

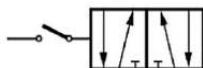




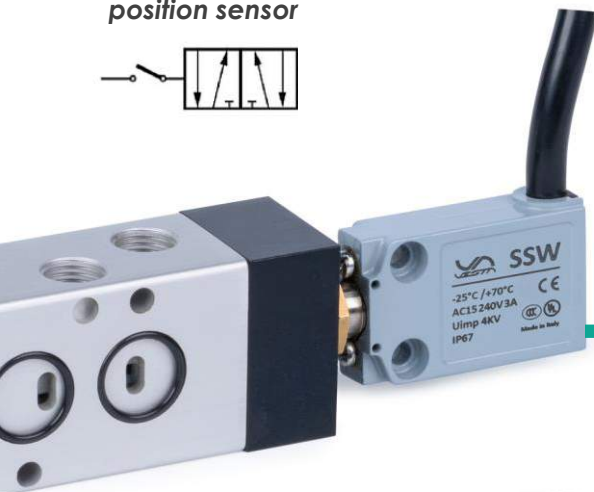
BACK TO
THE RANGE

VALVES FOR EXTREME ENVIRONMENT

Available with
position sensor



SINCE
1989



High & low temp.
versions available



ATEX II 3GD
as standard



E/NM Series

22mm coil
G1/8", 1/4", 1/2", NAMUR

ATEX II 3GD dust resistant lip-seals valves

CLICK ON
PRODUCTS ↑






BACK TO
THE RANGE

ATEX II 2 GD VALVES & SOLENOID VALVES

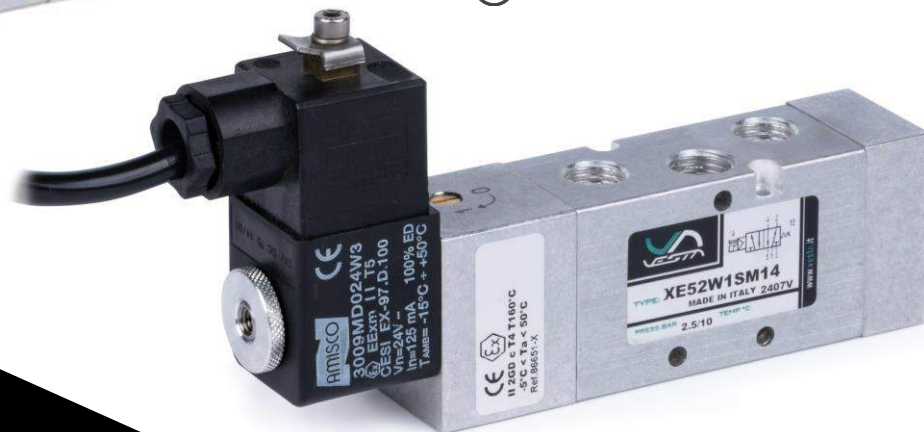
 ATEX II 2GD

XE/XNM/XSVE

22mm coil ATEX II 2GD
G 1/4", G 1/2", NAMUR, ISO 1

 High & low temp.
versions available

ATEX II 2GD full metal-body lip-seals valves



CLICK ON
PRODUCTS ↑



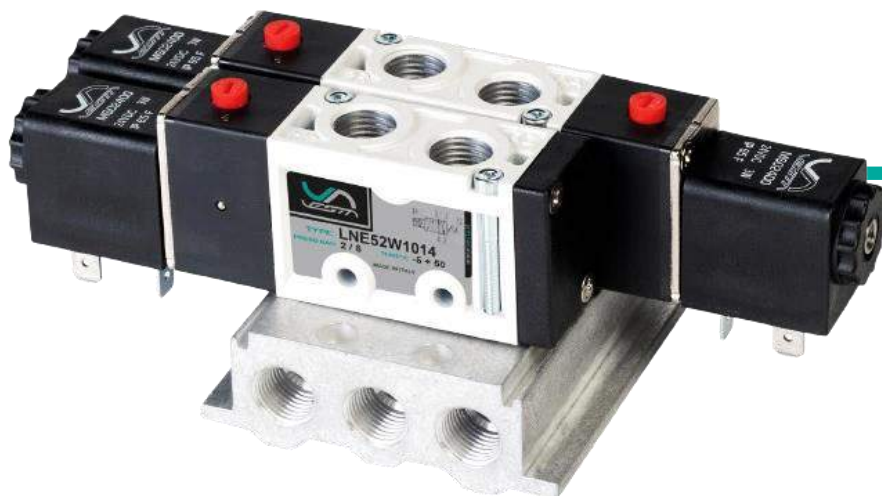


BACK TO
THE RANGE

VALVES FOR STANDARD ENVIRONMENT



NBR lip seals



External air supply
versions available



LNE/LNM Series

22mm coil
G1/8", 1/4", 3/8", 1/2", NAMUR

Light die-cast body lip-seals valves

CLICK ON
PRODUCTS ↑






BACK TO
THE RANGE

ISO 5599 VALVES & SOLENOID VALVES



 High & low temp.
versions available

SVP/SVE Series

22/30mm coil
SIZE ISO 1, ISO 2, ISO 3, ISO 4

Die-cast body lip-seals ISO 5599 valves

 Manifolds available
for all sizes (1, 2, 3, 4)

CLICK ON
PRODUCTS ↑





BACK TO
THE RANGE



Innovative system for
coils configuration



Switching
Time 15ms



Assembly kits
available



MULTIPOLE & FIELDBUS VALVE MANIFOLD

EWJ MULTIPOLE ISLAND

Operator 10mm
IN: G1/4" OUT: tube Ø 6, Ø 8

Self-configuration modular plug-in valve terminal

EWJ NETLOGIC

PROFINET, ETHERNET IP, ETHERCAT

Industrial network protocol valve terminal

CLICK ON
PRODUCTS ↑





BACK TO
THE RANGE

MINI SOLENOID VALVES



Flow rate G1/4"
1,400 NL/min



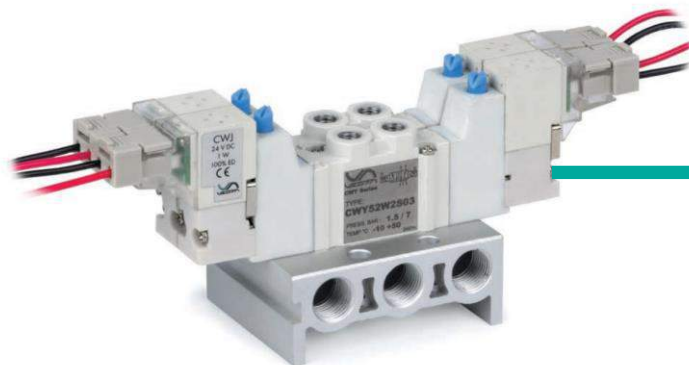
K Series

17mm coil
G1/8", 1/4", 1/2"

High-flow quick-exchange mini valves



Quick switching
times up to 35Hz



Y Series

10mm coil
M5 ports

Mini M5 port valves manifold

CLICK ON
PRODUCTS ↑





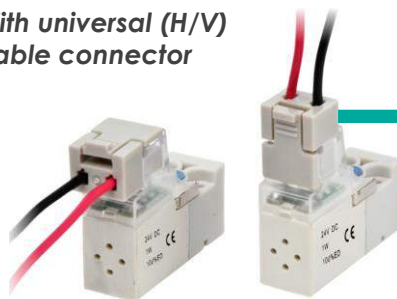
DIRECT ACTING 3/2 OPERATORS



With universal (H/V)
cable connector



Fast switching
times up to 30Hz



CWJ-10

10mm

3/2 micro operators 10mm (manifold available)



Modular bodies for
quick assembly



QBE

22mm coil - G1/8"

3/2 direct acting solenoid valves

CLICK ON
PRODUCTS ↑





BACK TO
THE RANGE

HIGH-FLOW 3/2 POPPET VALVES



High & low temp.
versions available



Flow rate 6.000
to 60.000 NL/min



PV32

22/30mm coil
G1/8", 1/4", 3/8", 1/2", 3/4", 1", 1 1/2", 2"

3/2 high-flow poppet valves for air & vacuum



Vacuum with
servo-vacuum
available

CLICK ON
PRODUCTS ↑





BACK TO
THE RANGE

MANUAL VALVES



Available with
AISI 304 levers



High & low temp.
versions available

VCML

G1/8", 1/4", 1/2"

Manual lever valves (AISI 304 lever option)

Available with
pneumatic return



VCMT

G1/8", 1/4"

Manual button valves



VFP

G1/4"

Foot pedal valves

CLICK ON
PRODUCTS ↑



BACK TO
THE RANGE

MECHANICAL VALVES



High & low temp.
versions available

VCMS

G1/8", 1/4"

Cam actuated mechanical valves



VCLL

G1/8"

Lateral roller-lever mechanical valves



Food grade (AISI 304)
operators available



VCLR

G1/8"

Roller-lever valves (AISI 304 operator option)

CLICK ON
PRODUCTS ↑



BACK TO
THE RANGE

MANUAL & MECHANICAL MICRO VALVES



MPGI/MPF/MSR

Push-in Tube Ø4, M5

Manual button/switch micro valves

Available NC/NO,
5/2 and M5 ports



MMA

Push-in Tube Ø4, M5

Cam actuated mechanical micro valves



MMR/MMS

Push-in Tube Ø4, M5

Roller lever mechanical micro valves

CLICK ON
PRODUCTS ↑

PNEUMATIC LOGIC ELEMENTS

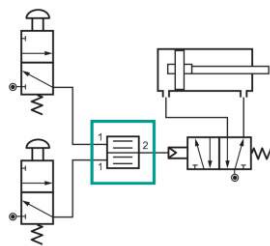


AND/OR/YES/NOT

Push-in Tube Ø4

Logic elements for pneumatic control

Two-hand safety valve



SBI

Push-in Tube Ø4

Two-hand safety valves



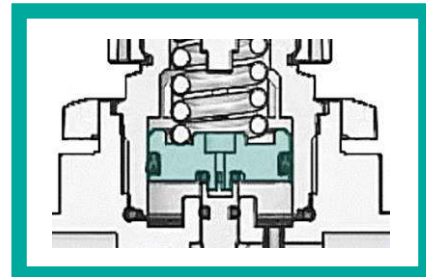
AIR TREATMENT UNITS

All series with
aluminium body
for **high-resistance**



From 1/8" **precision regulation**
up to 2" **high-flow elements**

Acetal polymer pistons
with NBR lip seals for
stable regulation



AIR TREATMENT

 RANGE MAP

 3D STEP FILES 

MANUAL & PILOT PRESSURE REGULATORS

[page 34](#)

CLICK ON
PRODUCTS



PRECISION & PROPORTIONAL PRESSURE REGULATORS

[page 35](#)



MODULAR LINES 1/4" TO 1" FRL UNITS

[page 36-37](#)



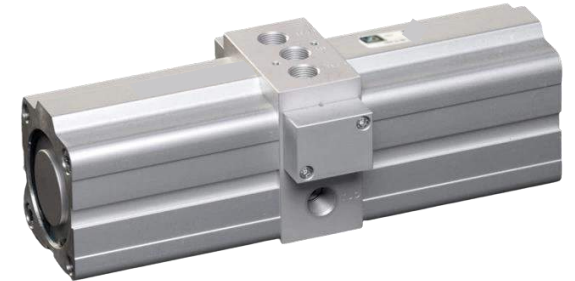
HIGH-PRESSURE & HIGH-FLOW FRL UNITS

[page 39](#)



PRESSURE BOOSTERS

[page 39](#)





MANUAL & PILOT PRESSURE REGULATORS

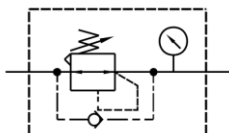


TU-R SIZE 1/2

M5, G1/8", 1/4"

Pressure microregulators (with backflow option)

Regulators available
with backflow option



High & low temp.
versions available

TU-R SIZE 3/4/5

G1/4", 3/8", 1/2", 3/4", 1"

Pressure regulators (with backflow option)

Flow rates up to
50,000 NL/min



TU-RP SIZE 6/7

G1/2", G1", G1 1/2", G2"

High-flow pilot regulators

CLICK ON
PRODUCTS ↑



BACK TO
THE RANGE

HIGH-PRECISION PRESSURE REGULATORS



0.2% F.S.
precision

HPR SERIES

G1/8", 1/4", 1/2"

High-precision manual pressure regulators



DPV SERIES

OPERATION
MANUAL

G1/4", 1/2" (1")

Proportional valves with electric control

High flow rates:
G1/2" 5,000 NL/min
G1" 14,200 NL/min



DPS SERIES

OPERATION
MANUAL

G1/8"

Digital pressure switches (positive and vacuum)

Output: 1-5V,
4-20mA & PNP



DFM SERIES

G1/4", 1/2", 3/4"

Digital flow meters (100 to 2,000 NL/min)

CLICK ON
PRODUCTS





BACK TO
THE RANGE

FRL UNITS – MODULAR LINES



Metal bowl
available
for all sizes

TU-FRL SIZE 2

G1/4"

R = Regulator, **FR** = Filter-regulator, **FRL** = FRL Unit
F = Filter, **L** = Lubricator, **VM** = 3/2 on-off valve
VS = Slow start + shut-off valve



Filtering from
40 to 0.01 μm

TU-FRL SIZE 3

G1/4", 3/8", 1/2"

R = Regulator, **FR** = Filter-regulator, **FRL** = FRL Unit
F = Filter, **L** = Lubricator, **VM** = 3/2 on-off valve
VS = Slow start + shut-off valve, **MMF** = Micro-mist filter

CLICK ON
PRODUCTS ↑



BACK TO
THE RANGE

FRL UNITS – MODULAR LINES

TU-FRL SIZE 4

G1/2"

R = Regulator, **FR** = Filter-regulator, **FRL** = FRL Unit
F = Filter, **L** = Lubricator, **VM** = 3/2 on-off valve
VS = Slow start + shut-off valve

TU-FRL SIZE 5

G3/4", 1"

R = Regulator, **FR** = Filter-regulator, **FRL** = FRL Unit
F = Filter, **L** = Lubricator, **VM** = 3/2 on-off valve
VS = Slow start + shut-off valve

TU-SF SIZE 4/5

G1/2", 1"

Special filters, micro-mist and water separators



Metal bowl
available
for all sizes



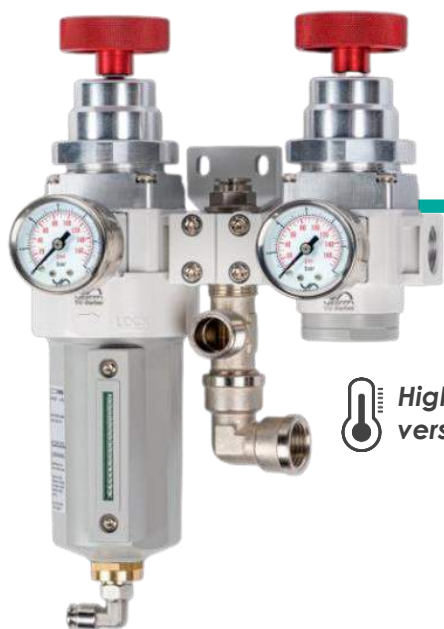
Available
with differential
pressure indicator

CLICK ON
PRODUCTS ↑



BACK TO
THE RANGE

HIGH-FLOW, HIGH-PRESSURE & BOOSTERS



0-15 bar regulation,
20 bar resistance

High & low temp.
versions available

Flow rates up to
50,000 NL/min



TU-F, R, L SIZE 4H

G1/2"

High-pressure air treatment units (0-15 bar)
HHT version (+120°C), LLT version (-40°C)



TU-F, R, L SIZE 6/7

G1 1/2", 2"

High-flow filters & regulators



PBR SERIES

ø40, 63, 100

Pressure boosters (1:2, 1:3, 1:4)

Multiplication
factor up to x4



CLICK ON
PRODUCTS ↑



FITTINGS



RANGE MAP



FITTINGS CATALOG



QUICK PUSH-IN FITTINGS & MINI FITTINGS

page 40



BRASS FITTINGS

page 40



STAINLESS STEEL FITTINGS

page 40



CONTROL VALVES

page 40



FLOW REGULATORS

page 41



SILENCERS

page 41



FITTINGS WITH VACUUM GENERATOR

page 41





FLOW REGULATORS, SILENCERS, VACUUM



QF

G1/8", 1/4", 3/8", 1/2"

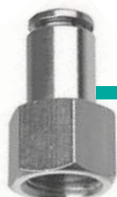
Quick push-in fittings



QM

M3, M5, M6

Quick push-in mini fittings



QB

G1/8", 1/4", 3/8", 1/2"

Brass push-in fittings



Material:
AISI 316



QX

G1/8", 1/4", 3/8", 1/2"

Stainless steel push-in fittings



QV

G1/8", 1/4", 3/8", 1/2"

Control valves

CLICK ON
PRODUCTS ↑

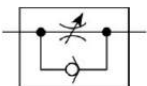




FLOW REGULATORS, SILENCERS, VACUUM



Precision control
high flow capacity



VRF

Precision speed controllers

G1/8", 1/4", 3/8", 1/2"



QR

Push-in speed controllers

G1/8", 1/4", 3/8", 1/2"



QS

Silencers & exhaust control silencers

G1/8", 1/4", 3/8", 1/2"



Vacuum pressure
up to -0.90 bar



VQ

Fittings with vacuum generators

G1/8"

CLICK ON
PRODUCTS ↑





A custom Experience.

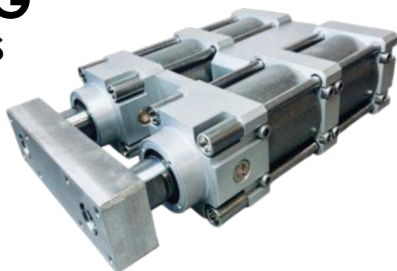
RAILWAYS & METRO SYSTEMS



TRUCKS & AUTOMOTIVE



WELDING MACHINERIES



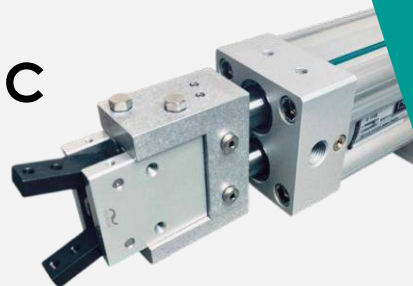
CEMENT & STEEL PLANTS



FOOD & BEVERAGE



PLASTIC PROCESS



CLICK ON
PRODUCTS ↑

BACK TO THE RANGE



Vesta Automation S.r.l.

Via Martiri di Belfiore 69/A

45100 Rovigo – Italy



+39 0425 474838

info@vesta.it

www.vesta.it

+39 347 634 7881

Vesta Automation Srl



VESTA
GROUP

P.IVA/VAT: 03640490284
© Vesta Automation Srl

