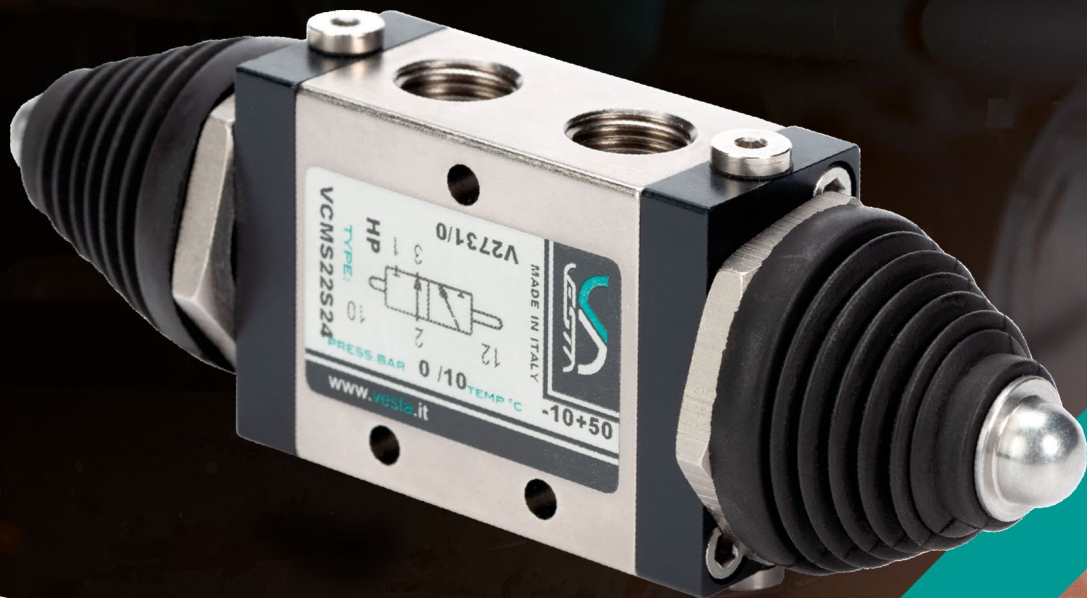


# Experience in motion.



**CUSTOM COMPONENTS FOR RAILWAYS AND METRO**  
COMPONENTI CUSTOM PER TRENI E METROPOLITANE







Vesta Automation is specialized in making components for industrial automation. Founded in 1984, in **over 40 years of experience** Vesta developed projects in over 60 international markets, specializing in pneumatic automation for outdoor environments and heavy-duty applications: **cement plants, truck equipment, railways and amusement sectors, process**. Production, in the ISO:9001/2015 certified Rovigo plant, ranges from pneumatic cylinders, electric actuators, pneumatic valves and solenoid valves, air treatment units and precision pressure control systems.



Different product certifications can be provided by Vesta.  
 Vesta può rilasciare diverse certificazioni di prodotto.

Vesta Automation è un'azienda specializzata nella produzione di componenti per l'automazione industriale. Nata nel 1984, in **oltre 40 anni di esperienza** ha sviluppato progetti nei settori più disparati e in oltre 60 mercati internazionali, specializzandosi nell'automazione pneumatica in ambienti outdoor e applicazioni gravose: **cementifici, attrezzature per camion, componenti per il settore ferroviario e dell'amusement, processo**. La produzione, nello stabilimento di Rovigo certificato ISO:9001/2015, spazia da cilindri pneumatici, attuatori elettrici, valvole ed elettrovalvole pneumatiche, unità di trattamento aria e controllo di precisione della pressione.



Check out Vesta  
 Production Range:  
 Scopri il Production  
 Range di Vesta:



Vesta Automation HQ is located in Rovigo - Italy  
 Easily accessible from Venice, Bologna and Milan



## PNEUMATIC CYLINDERS CILINDRI PNEUMATICI

Full range of pneumatic cylinders, with **polyurethane seals and stainless steel rods**.  
**All the ISO standard families** are available, with big-size cylinders up to Ø320.  
All cylinders can be supplied with seals for **very low and very high temperatures**.

Gamma completa di cilindri pneumatici, con **guarnizioni in poliuretano e steli Inox**.  
Tutte le **famiglie standard ISO** sono disponibili, con dimensioni fino a Ø320).  
Tutti i cilindri possono essere forniti con guarnizioni **per basse e alte temperature**.



## VALVES AND SOLENOID VALVES VALVOLE ED ELETTROVALVOLE




Mechanical and solenoid valves with lip seals, **resistant to humidity and dust**.  
Solenoid valves can be supplied with H class coils and **with 110V DC coils**.  
Vesta valves can be ordered in **low temperature version (-40°C)**.

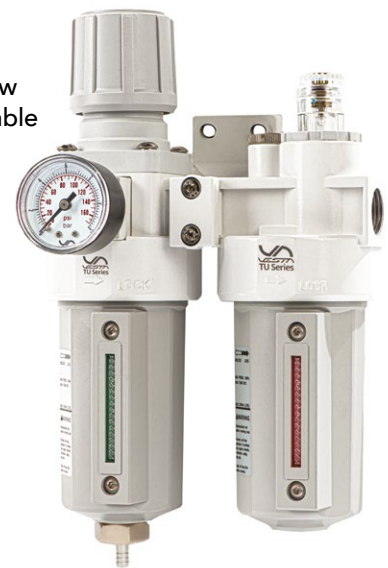
Valvole con guarnizioni a labbro per **ambienti umidi e polverosi**.  
Elettrovalvole fornibili con bobine speciali Classe H, e **bobine 110V DC**.  
Tutte le valvole possono essere ordinate per **bassa temperatura (-40°C)**.

## AIR TREATMENT UNITS GRUPPI DI TRATTAMENTO ARIA

A complete series of regulators and FRL units, **from size G1/4" to G2"**.  
All the sizes can be supplied with **metal bowl** for outdoor applications.  
Air treatment units can also be provided for **high and low temperatures**.

Una serie completa di regolatori e unità FRL, **da taglia G1/4" a G2"**.  
Tutte le taglie sono disponibili con **tazze in metallo** per utilizzo outdoor.  
I gruppi di trattamento aria sono anche per **alte e basse temperature**.

 Seals for high & low temperature available







## VALVES AND SOLENOID VALVES FOR PANTOGRAPH VALVOLE ED ELETTROVALVOLE PER PANTOGRAFI

Pneumatic valves and solenoid valves mounted on **railways and metro systems** must resist to very harsh conditions of operation. **Special sealing systems, hard surface treatments and full metal components** are needed in order to grant long lasting life and resistance to vibrations, as they are a crucial safety component of the train.

Valvole ed elettrovalvole per **ferrovie e metropolitane** devono resistere a condizioni di funzionamento molto gravose. **Guarnizioni ad alta tenuta, trattamenti speciali e tutte componenti interamente in metallo** sono necessari per garantire lunga durata e resistenza a forti vibrazioni, in quanto componenti di sicurezza.

### APPLICATION EXAMPLE:

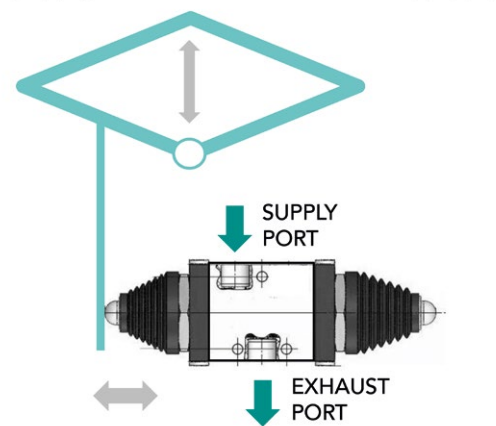
Pantograph safety (system exhaust if the cable is missing)

### SPECIAL REQUEST:

Low temp. resistance (-40°C), custom switching force

### TECHNICAL FEATURES:

Double-actuation G1/4" mechanical valve  
Lip seals, spacers and grease for low temperatures  
Switching force of 60N (tested for anti-vibration)



Vesta develops **cylinders with extremely special functions**, and the capacity of operating in hard environment conditions. Fixing dimensions, mechanical features, as well as details on sealing systems are defined together with the customer, in order to **provide completely tailor-made and high-performance technical solutions**.

Vesta sviluppa **cilindri con funzioni estremamente speciali**, capaci di operare in condizioni ambientali difficili. Le dimensioni di fissaggio, le caratteristiche meccaniche, nonché i dettagli sui sistemi di tenuta vengono definiti insieme al cliente, al fine di **fornire soluzioni tecniche completamente su misura e per alte performance**.

#### APPLICATION EXAMPLE:

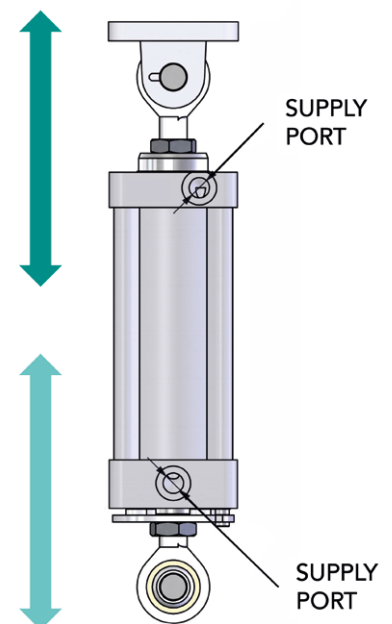
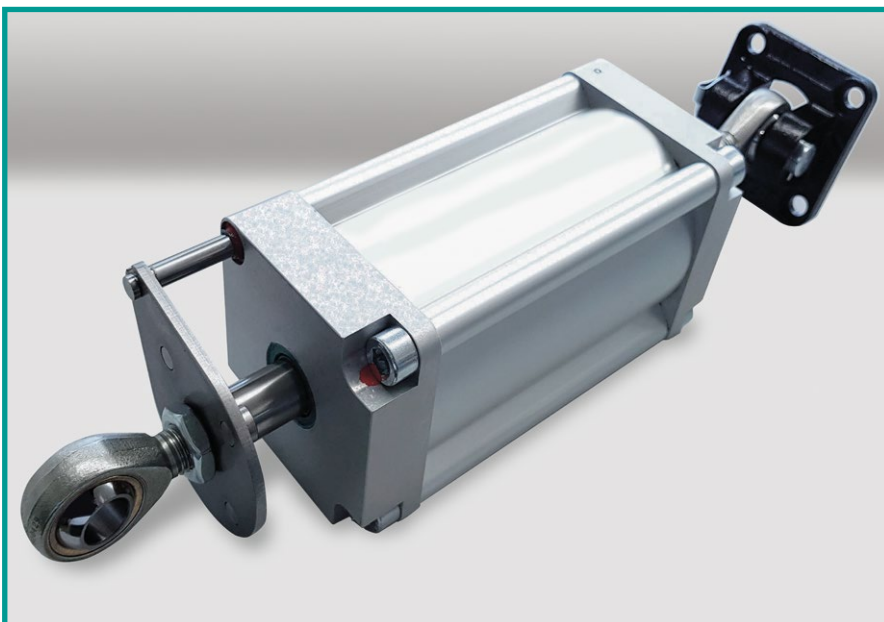
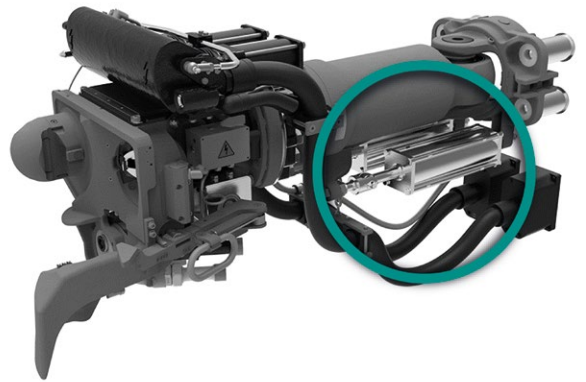
Precision control in train wagon coupling system

#### SPECIAL REQUEST:

Hybrid function (air control + manual movement)  
Low temperature environment and presence of ice

#### TECHNICAL FEATURES:

Double acting Ø80 cylinders with custom fixings  
2 independent non-rotation telescopic through-rods  
Chromium plated stainless steel rods and scrapers





## COMPLETE PNEUMATIC SYSTEMS FOR CARGO TRAINS SISTEMI PNEUMATICI COMPLETI PER TRENI CARGO

With decades of experience in the railways industry, Vesta Automation can provide **complete pneumatic systems to control movements in cargo trains**: full-metal air treatment units and regulators (TU Series), full-metal valves with total sealing, and cylinders of big sizes, up to Ø320 bore. **All is for both high and low temperatures.**

Con decenni di esperienza nel settore ferroviario, Vesta Automation può fornire **sistemi pneumatici completi per movimentazioni nei treni merci**: unità di trattamento aria in metallo (Serie TU), valvole con guarnizioni a tenuta totale, e cilindri di grandi dimensioni, fino a taglia Ø320. **Il tutto sia per alte che per basse temperature.**

### APPLICATION EXAMPLE:

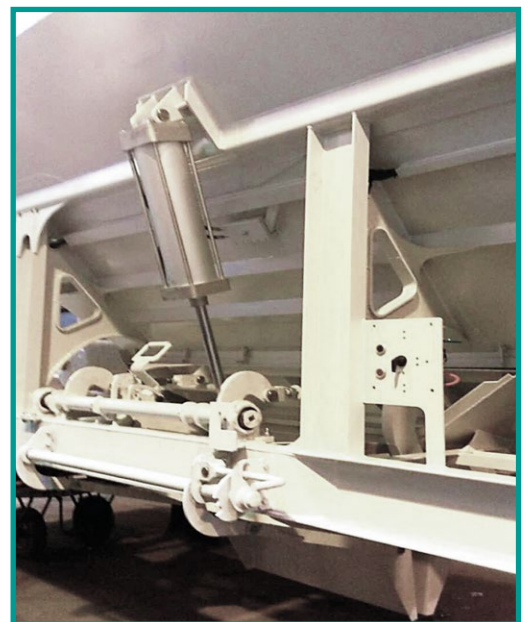
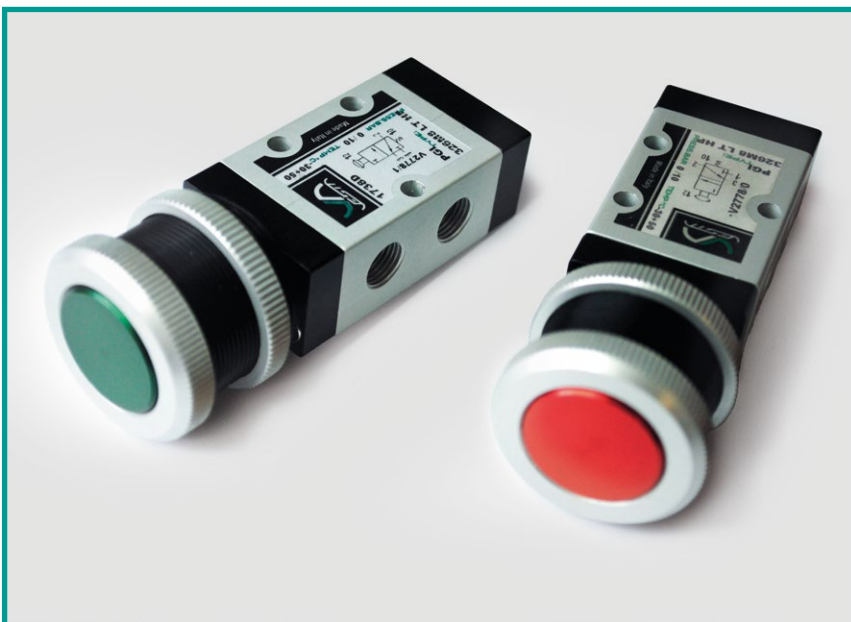
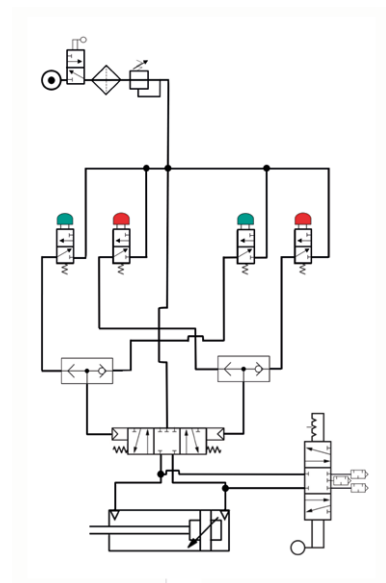
Control system for gate valve movement in cargo train

### SPECIAL REQUEST:

Double manual system, low temp. resistance (-40°C)

### TECHNICAL FEATURES:

G 1/8" manual valves with full metal components  
Custom push buttons (green/red anodization)  
Double acting Ø160 cylinders, low temp. seals + grease





## CYLINDERS AND VALVES FOR SPECIAL PURPOSE ON TRAINS CILINDRI E VALVOLE PER FUNZIONI SPECIALI SUI TRENI

### APPLICATION EXAMPLE:

Pantograph movement control

### SPECIAL REQUEST:

Resistance to high and low temperatures

### TECHNICAL FEATURES:

G 1/4" solenoid valves 5/2 function  
Full metal components and total sealing  
Class H solenoids, 24 VDC and 110 VDC

### APPLICATION EXAMPLE:

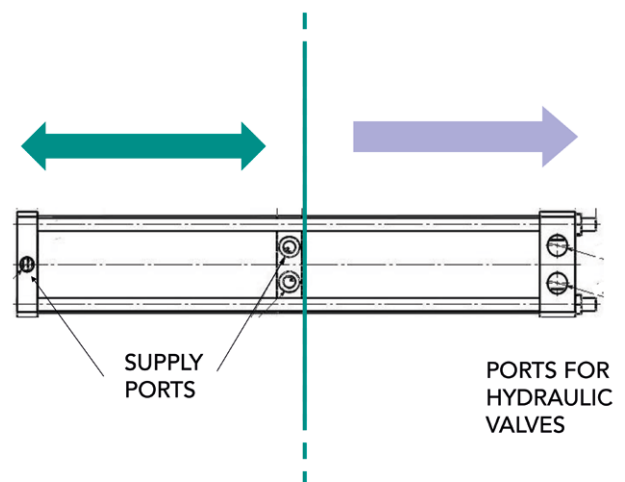
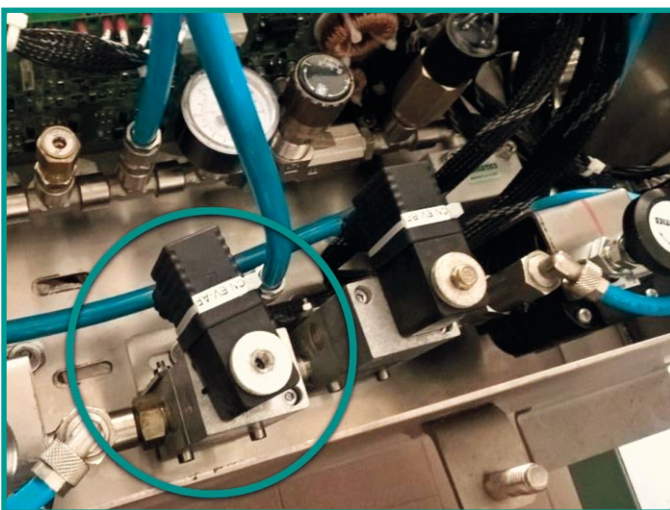
Air/water pump for train toilets

### SPECIAL REQUEST:

Resistance to water and detergents

### TECHNICAL FEATURES:

Double acting Ø80 cylinder  
Integrated stainless steel water tank  
Special technopolymer head






References available upon request. Ask us for more: [info@vesta.it](mailto:info@vesta.it)  
Referenze disponibili su richiesta. Chiedici di più: [info@vesta.it](mailto:info@vesta.it)







**VESTA AUTOMATION srl**  
Via Martiri di Belfiore 69/A  
45100 Rovigo - Italia

 +39 0425 474838  
 info@vesta.it  
 Vesta Automation Srl

Check out Vesta  
Production Range:  
Scopri il Production  
Range di Vesta:

