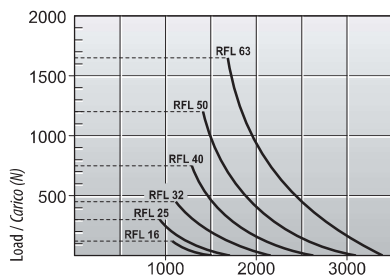
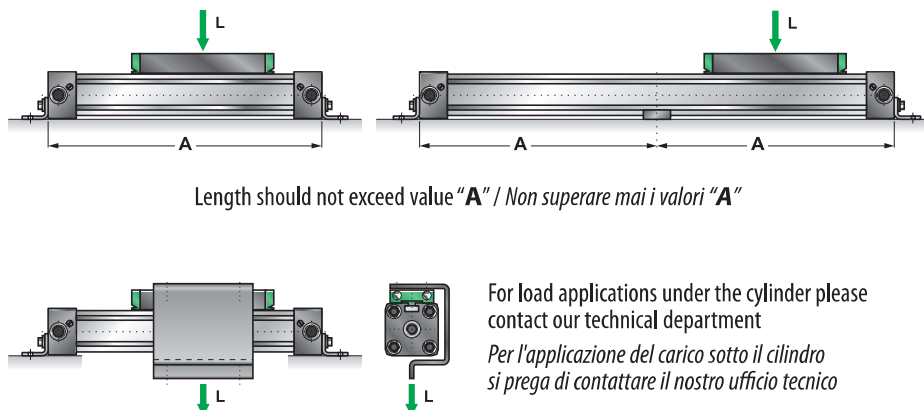


**TRANSVERSE FORCE GRAPH RLF SERIES / DIAGRAMMI DI FLESSIONE SERIE RLF**



Distances "A" of munting with deflection 1 mm.  
Distanza "A" fra i supporti con inflessione 1 mm.



For load applications under the cylinder please contact our technical department

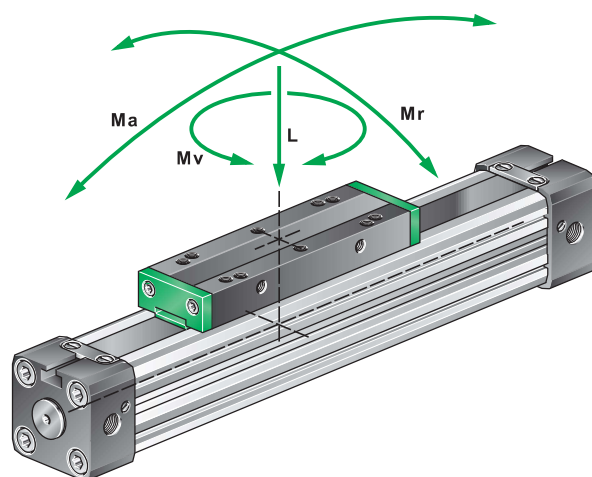
Per l'applicazione del carico sotto il cilindro si prega di contattare il nostro ufficio tecnico

**FORCES AND TORQUE / FORZE E MOMENTI TORCENTI**

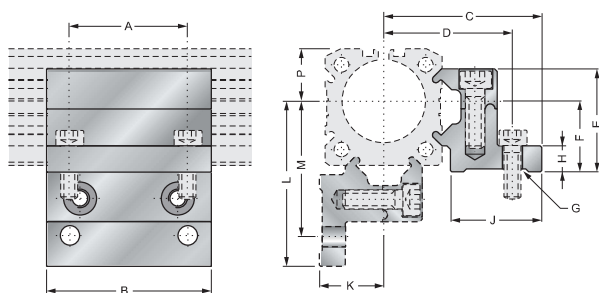
The figures above are max. values based on light shock free duty and speed of 0,45 m/s.  
Max. pressure 6 bar. An exceeding of the values in dynamic operations, even for short moments, has to be avoided.  
Attention: Resulting forces could lead to extreme exceedings of the values.  
In case of undefinable situations the above max. values have to be reduced by 20%.

Valori di carico massimi singolarmente applicati con V 0,45 m/s e pressione max = 6 bar  
In condizioni dinamiche, anche per brevi istanti, non superare mai i carichi indicati.  
In condizioni di carico non esattamente definite o calcolabili ridurre i valori indicati del 20%.  
Inadatto a sopportare combinazioni di più carichi applicati contemporaneamente.

Cylinder Cilindro Ø	Thrust force (N) Forza di spinta (N) (6 bar)	Max allowed load(N) Carico max(N)	Max allowed bending moments(Nm) Momento flettente max(Nm)		Max allowed torque(Nm) Torsione max(Nm)
			L	M <sub>a</sub> axial	
16	110	120	4	0,3	0,5
25	250	300	15	1	3
32	420	450	30	2	4,5
40	640	750	60	4	8
50	1000	1200	115	7	15
63	1550	1650	200	8	24

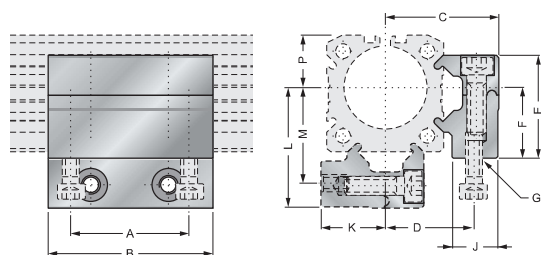
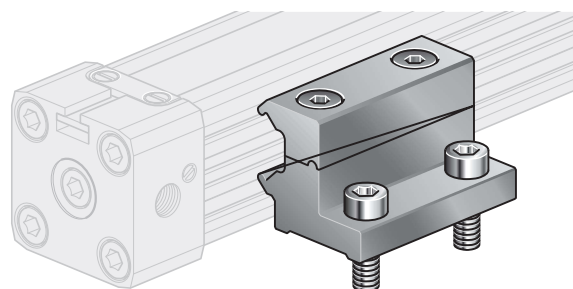


**FIXING ACCESSORIES / ACCESSORI DI FISSAGGIO**



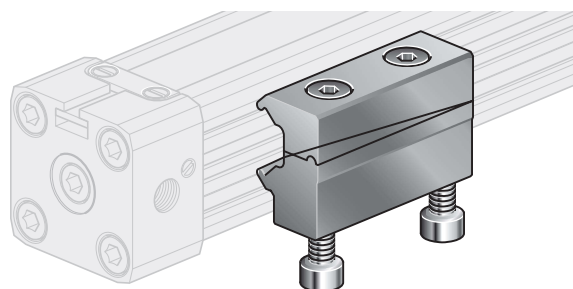
Bore Alesaggio	A	B	C	D	E	F	G	H	J	K	L	M	P	Code Codice
25	36	50	47,5	40	31,3	22	Ø5,5	10	26	20	49,5	42	16	RLMW-25
32	36	50	56	47,5	39	30	Ø6,5	10	28,5	27,6	61	52,5	21,5	RLMW-32

MID SUPPORT  
SUPPORTO INTERMEDIO **RLMW-..**



Bore Alesaggio	A	B	C	D	E	F	G	J	K	L	M	P	Code Codice
25	36	50	34,5	27	31,3	22	M5	14	20	36,5	29	16	RLMG-25
32	36	50	41,8	34,2	39	30	M6	14	27,6	47	39,5	21,5	RLMG-32

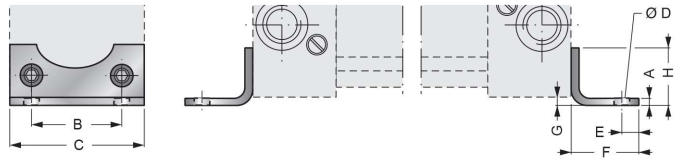
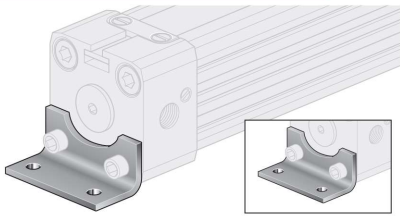
MID SUPPORT  
SUPPORTO INTERMEDIO **RLMG-..**





## RLP- ..

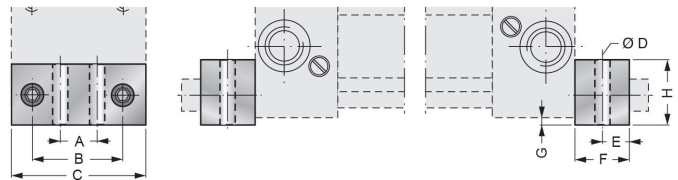
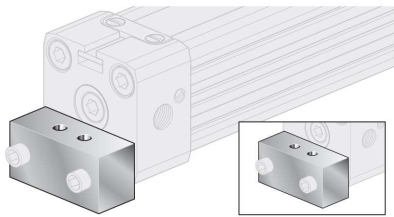
FOOT MOUNTING  
MONTAGGIO A PIEDINI



Bore Alesaggio	A	B	C	ØD	E	F	G	H	Code Codice
16	1,5	18	26	3,6	4,0	14	1,5	12,5	<b>RLP- 16</b>
25	2,5	27	40	5,5	6,0	22	2	18	<b>RLP- 25</b>

## RLQ- ..

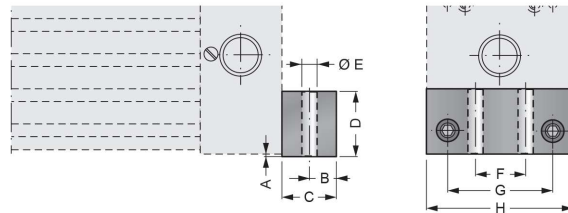
SQUARE FOOT MOUNTING  
MONTAGGIO A PIEDINI QUADRI



Bore Alesaggio	A	B	C	ØD	E	F	G	H	Code Codice
32	20	36	51	6,5	8	24	4	20	<b>RLQ- 32</b>
40	30	54	71	9,0	11,5	24	2	20	<b>RLQ- 40</b>

## RLQ- ..

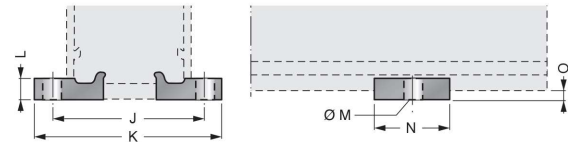
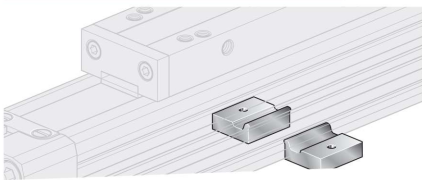
SQUARE FOOT MOUNTING  
MONTAGGIO A PIEDINI QUADRI



Bore Alesaggio	A	B	C	D	ØE	F	G	H	Code Codice
50	1	12,5	25	25	9	45	70	80	<b>RLQ- 50</b>
63	2	15	30	40	11	48	78	105	<b>RLQ- 63</b>

## RLMI- ..

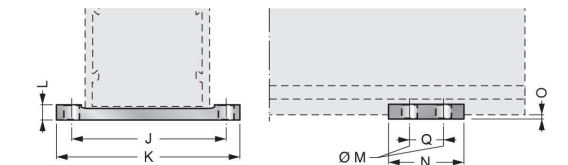
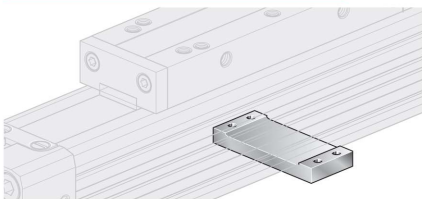
MID SUPPORTS  
SUPPORTI INTERMEDI



Bore Alesaggio	J	K	L	ØM	N	O	Code Codice
16	41,5	53,5	5	5,5	20	3	<b>RLMI- 16</b>
25	48,5	60	6	5,5	20	4	<b>RLMI- 25</b>

## RLMU- ..

MID SUPPORT  
SUPPORTO INTERMEDIO

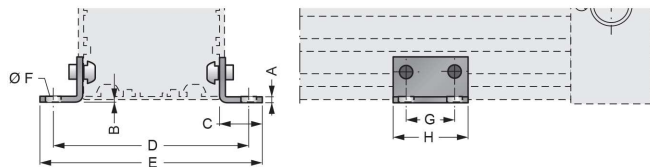
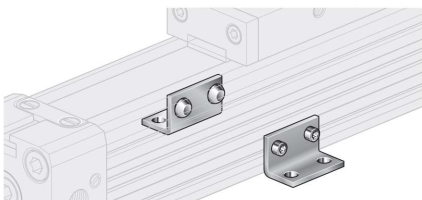


Bore Alesaggio	J	K	L	ØM	N	O	Q	Code Codice
32	61	73	10	6,5	55	6	40	<b>RLMU- 32</b>
40	70	85	10	6,5	60	8,5	45	<b>RLMU- 40</b>

(\*) On request / Su richiesta

## RLML- ..

MID SUPPORTS  
SUPPORTI INTERMEDI



Bore Alesaggio	A	B	C	D	E	ØF	G	H	Code Codice
50	5	1	35	123	148	6,5	30	45	<b>RLML- 50</b>
63	5	3,5	35	147	172	6,5	30	45	<b>RLML- 63</b>

(\*) On request / Su richiesta

## RL.. - SG

SEALS KIT  
KIT GUARNIZIONI DI RICAMBIO

Seals kit code = **RL** + **Bore** + - **SG**: (The kit includes all seals).

Codice del kit = **RL** + **Alesaggio** + - **SG**: (Il kit comprende tutte le guarnizioni necessarie).

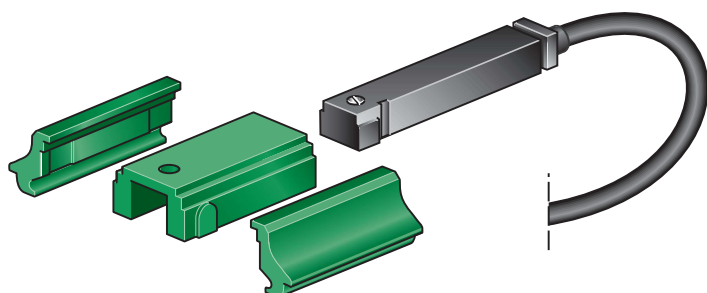
Example / Esempio: **RL 32 V - SG**



MAGNETIC SWITCHES FOR RL.. CYLINDERS / FINECORSA MAGNETICI PER CILINDRI RL..

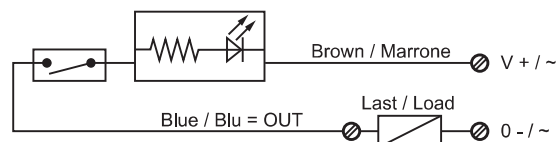
REED SWITCH  
SENSORE REED

ZRS 11



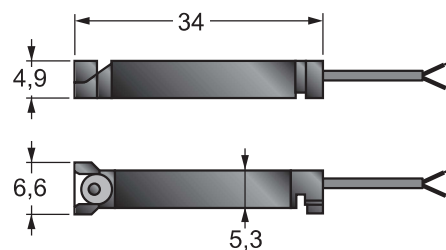
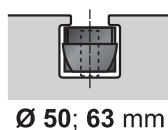
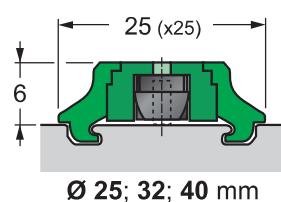
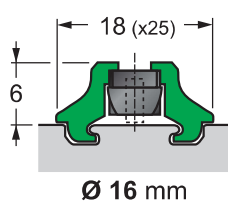
Cable standard length / Lunghezza cavo standard: 5000 mm

circuit / Circuito



Code Codice	Voltage range Tensione max	Switching current Corrente a 25 °C	Switching power (resistive) Potenza Induttiva	Degree of protection Grado di protezione	Working temperature Temperatura di lavoro	Switch Hysteresis Isteresi di inserzione	ON / OFF time Tempo di inserzione / disin.	Electric life Vita elettrica	Contact function Contatto
ZRS 11	5-130 AC-DC	200 mA	6W	IP67	-15 ÷ +60 °C	3 mm	1 - 0,3 msec	1 x 10 <sup>7</sup>	

MAGNETIC SWITCH BRACKET FOR RODLESS CYLINDER / FISSAGGIO PER SENSORE MAGNETICO SU CILINDRI SENZA STELO



MAGNETIC SWITCH POSITIONING / POSIZIONAMENTO DEI FINECORSI MAGNETICI

